

Datasheet for ABIN5514974
anti-MDFI antibody (Middle Region)



[Go to Product page](#)

1 Image

Overview

| | |
|----------------------|-------------------------------------|
| Quantity: | 100 µL |
| Target: | MDFI |
| Binding Specificity: | Middle Region |
| Reactivity: | Human, Cow, Dog, Pig, Rabbit, Sheep |
| Host: | Rabbit |
| Clonality: | Polyclonal |
| Conjugate: | This MDFI antibody is un-conjugated |
| Application: | Western Blotting (WB) |

Product Details

| | |
|-----------------------|---|
| Immunogen: | The immunogen is a synthetic peptide directed towards the middle region of Human MDFI |
| Sequence: | AVTCQPQGNP LGCTPLLPND SGHPSELGGT RRAGNGALGG PKAHRKLQTH |
| Predicted Reactivity: | Cow: 79%, Dog: 79%, Human: 100%, Pig: 86%, Rabbit: 79%, Sheep: 86% |
| Characteristics: | This is a rabbit polyclonal antibody against MDFI. It was validated on Western Blot. |
| Purification: | Affinity purified |

Target Details

| | |
|-------------------|--|
| Target: | MDFI |
| Alternative Name: | MDFI (MDFI Products) |
| Background: | This protein is a transcription factor that negatively regulates other myogenic family proteins. |

Target Details

Studies of the mouse homolog, I-mf, show that it interferes with myogenic factor function by masking nuclear localization signals and preventing DNA binding. Knockout mouse studies show defects in the formation of vertebrae and ribs that also involve cartilage formation in these structures.

Alias Symbols: MDFI,

Protein Interaction Partner: PDIA5, USP20, ARID5A, ZNF266, KAT5, SPRY2, SPRY1, NR1H3, ZBTB24, ARHGAP32, KIAA0040, CREB5, MAGED1, ZNF264, GTF3C5, APLN, AKAP17A, ZNF230, ZNF223, ZNF155, ZNF138, ZNF136, ZNF124, ZNF79, WNT11, VHL, NR1H2, TYRO3, TNP2, TNNI1, TGIF1, GNAI2, GATA2, EIF4A2, D

Protein Size: 246

| | |
|-----------------|---|
| Gene ID: | 4188 |
| NCBI Accession: | NP_005577 |
| UniProt: | Q99750 |
| Pathways: | Maintenance of Protein Location |

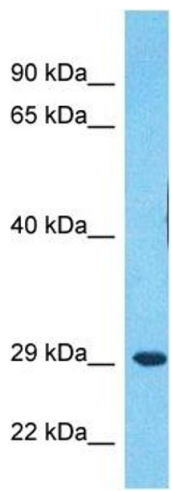
Application Details

| | |
|--------------------|--|
| Application Notes: | Optimal working dilution should be determined by the investigator. |
| Restrictions: | For Research Use only |

Handling

| | |
|--------------------|--|
| Format: | Liquid |
| Buffer: | Liquid. Purified antibody supplied in 1x PBS buffer with 0.09 % (w/v) sodium azide and 2 % sucrose. |
| Preservative: | Sodium azide |
| Precaution of Use: | This product contains Sodium azide: a POISONOUS AND HAZARDOUS SUBSTANCE which should be handled by trained staff only. |
| Storage: | -20 °C |
| Storage Comment: | For short term use, store at 2-8°C up to 1 week. For long term storage, store at -20°C in small |

aliquots to prevent freeze-thaw cycles.



Western Blotting

Image 1. Host: Rabbit Target Name: MDFI Sample Type: RPMI-8226 Whole Cell lysates Antibody Dilution: 1.0ug/ml