

Datasheet for ABIN5515174  
**anti-SLC13A5 antibody (Middle Region)**[Go to Product page](#)

## 1 Image

## Overview

Quantity:	100 µL
Target:	SLC13A5
Binding Specificity:	Middle Region
Reactivity:	Human, Mouse, Rat, Guinea Pig, Rabbit, Cow, Dog, Horse
Host:	Rabbit
Clonality:	Polyclonal
Conjugate:	This SLC13A5 antibody is un-conjugated
Application:	Western Blotting (WB)

## Product Details

Immunogen:	The immunogen is a synthetic peptide directed towards the middle region of Human SLC13A5
Sequence:	CKAMTLCICY AASIGGTATL TGTGPNVLL QGMNELFPDS KDLVNFASWF
Predicted Reactivity:	Cow: 92%, Dog: 85%, Guinea Pig: 100%, Horse: 85%, Human: 100%, Mouse: 77%, Rabbit: 100%, Rat: 93%
Characteristics:	This is a rabbit polyclonal antibody against SLC13A5. It was validated on Western Blot.
Purification:	Affinity Purified

## Target Details

Target:	SLC13A5
Alternative Name:	SLC13A5 ( <a href="#">SLC13A5 Products</a> )

## Target Details

Background: SLC13A5 is a tricarboxylate plasma transporter with a preference for citrate.

Alias Symbols: SLC13A5, NACT,

Protein Size: 522

Gene ID: 284111

Pathways: [Dicarboxylic Acid Transport](#)

## Application Details

Application Notes: Optimal working dilution should be determined by the investigator.

Restrictions: For Research Use only

## Handling

Format: Liquid

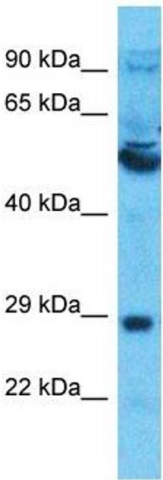
Buffer: Liquid. Purified antibody supplied in 1x PBS buffer with 0.09 % (w/v) sodium azide and 2 % sucrose.

Preservative: Sodium azide

Precaution of Use: This product contains Sodium azide: a POISONOUS AND HAZARDOUS SUBSTANCE which should be handled by trained staff only.

Storage: -20 °C

Storage Comment: For short term use, store at 2-8°C up to 1 week. For long term storage, store at -20°C in small aliquots to prevent freeze-thaw cycles.



Western Blotting

**Image 1.** Host: Rabbit Target Name: SLC13A5 Sample Type: Thymus Tumor lysates Antibody Dilution: 1.0ug/ml