



[Go to Product page](#)

Datasheet for ABIN5515346
anti-TRAPPC10 antibody (C-Term)

1 Image

Overview

Quantity:	100 µL
Target:	TRAPPC10 (TMEM1)
Binding Specificity:	C-Term
Reactivity:	Human, Mouse, Rat, Guinea Pig, Horse, Zebrafish (Danio rerio), Cow, Dog
Host:	Rabbit
Clonality:	Polyclonal
Conjugate:	This TRAPPC10 antibody is un-conjugated
Application:	Western Blotting (WB)

Product Details

Immunogen:	The immunogen is a synthetic peptide directed towards the C-terminal region of human TRAPPC10
Sequence:	IVDKIRNDFC NKQSDRCVVL SDPLKDSSRT QESWNAFLTK LRTLLLSMFT
Predicted Reactivity:	Cow: 100%, Dog: 100%, Guinea Pig: 100%, Horse: 100%, Human: 100%, Mouse: 100%, Rat: 100%, Zebrafish: 79%
Characteristics:	This is a rabbit polyclonal antibody against TRAPPC10. It was validated on Western Blot.
Purification:	Affinity Purified

Target Details

Target:	TRAPPC10 (TMEM1)
---------	------------------

Target Details

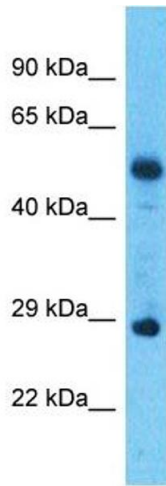
Alternative Name:	TRAPPC10 (TMEM1 Products)
Background:	<p>The protein encoded by this gene is a transmembrane protein found in the cis-Golgi complex. The encoded protein is part of the multisubunit transport protein particle (TRAPP) complex and may be involved in vesicular transport from the endoplasmic reticulum to the Golgi. Mutations in this gene could be responsible for the Unverricht-Lundborg type of progressive myoclonus epilepsy, or for autoimmune polyglandular disease type 1.</p> <p>Alias Symbols: EHOC1, GT334, TMEM1, TRS30, EHOC-1, TRS130</p> <p>Protein Size: 276</p>
Gene ID:	7109
NCBI Accession:	NM_003274 , NP_003265
UniProt:	Q86SI7

Application Details

Application Notes:	Optimal working dilution should be determined by the investigator.
Restrictions:	For Research Use only

Handling

Format:	Liquid
Buffer:	Liquid. Purified antibody supplied in 1x PBS buffer with 0.09 % (w/v) sodium azide and 2 % sucrose.
Preservative:	Sodium azide
Precaution of Use:	This product contains Sodium azide: a POISONOUS AND HAZARDOUS SUBSTANCE which should be handled by trained staff only.
Storage:	-20 °C
Storage Comment:	For short term use, store at 2-8°C up to 1 week. For long term storage, store at -20°C in small aliquots to prevent freeze-thaw cycles.



Western Blotting

Image 1. Host: Rabbit Target Name: TRAPPC10 Sample Type: Esophagus Tumor lysates Antibody Dilution: 1.0ug/ml