

Datasheet for ABIN5515409
anti-CPT2 antibody (N-Term)[Go to Product page](#)

3 Images

Overview

Quantity:	100 µL
Target:	CPT2
Binding Specificity:	N-Term
Reactivity:	Human, Mouse, Rat, Cow, Pig, Horse, Dog, Guinea Pig, Rabbit, Zebrafish (Danio rerio)
Host:	Rabbit
Clonality:	Polyclonal
Conjugate:	This CPT2 antibody is un-conjugated
Application:	Western Blotting (WB), Immunohistochemistry (IHC)

Product Details

Immunogen:	The immunogen is a synthetic peptide directed towards the N-terminal region of Human CPT2
Sequence:	FNPFFMAFNPD PKSEYNDQLT RATNMTVSAI RFLKTLRAGL LEPEVFHLNP
Predicted Reactivity:	Cow: 100%, Dog: 93%, Guinea Pig: 93%, Horse: 100%, Human: 100%, Mouse: 100%, Pig: 100%, Rabbit: 93%, Rat: 100%, Zebrafish: 86%
Characteristics:	This is a rabbit polyclonal antibody against CPT2. It was validated on Western Blot.
Purification:	Affinity Purified

Target Details

Target:	CPT2
Alternative Name:	CPT2 (CPT2 Products)

Target Details

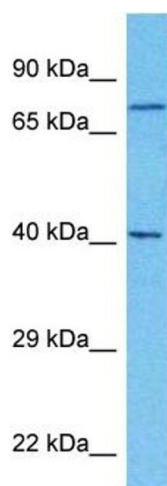
Background:	<p>The protein encoded by this gene is a nuclear protein which is transported to the mitochondrial inner membrane. Together with carnitine palmitoyltransferase I, the encoded protein oxidizes long-chain fatty acids in the mitochondria. Defects in this gene are associated with mitochondrial long-chain fatty-acid (LCFA) oxidation disorders.</p> <p>Alias Symbols: CPT2, CPT1,</p> <p>Protein Interaction Partner: UBC, BNA1, PGI1, ICT1, CAT2,</p> <p>Protein Size: 658</p>
Gene ID:	1376
NCBI Accession:	NP_000089
UniProt:	P23786
Pathways:	Regulation of Lipid Metabolism by PPARalpha, Monocarboxylic Acid Catabolic Process

Application Details

Application Notes:	Optimal working dilution should be determined by the investigator.
Restrictions:	For Research Use only

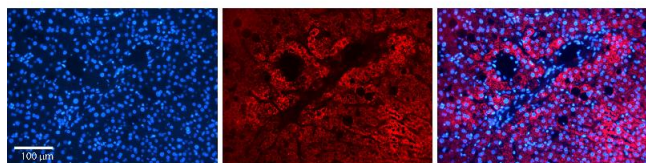
Handling

Format:	Liquid
Buffer:	Liquid. Purified antibody supplied in 1x PBS buffer with 0.09 % (w/v) sodium azide and 2 % sucrose.
Preservative:	Sodium azide
Precaution of Use:	This product contains Sodium azide: a POISONOUS AND HAZARDOUS SUBSTANCE which should be handled by trained staff only.
Storage:	-20 °C
Storage Comment:	For short term use, store at 2-8°C up to 1 week. For long term storage, store at -20°C in small aliquots to prevent freeze-thaw cycles.



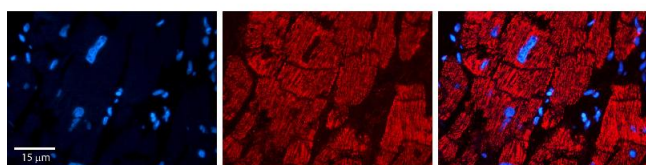
Western Blotting

Image 1. Host: Rabbit Target Name: CPT2 Sample Type: Ovary Tumor lysates Antibody Dilution: 1.0ug/ml



Immunohistochemistry

Image 2. Rabbit Anti-CPT2 Antibody Formalin Fixed Paraffin Embedded Tissue: Human Liver Tissue Observed Staining: Cytoplasm in hepatocytes Primary Antibody Concentration: N/A Other Working Concentrations: 1:600 Secondary Antibody: Donkey anti-Rabbit-Cy3 Secondary Antibody Concentration: 1:200 Magnification: 20X Exposure Time: 0.5 - 2.0 sec



Immunohistochemistry

Image 3. Rabbit Anti-CPT2 Antibody Formalin Fixed Paraffin Embedded Tissue: Human heart Tissue Observed Staining: Cytoplasmic in mitochondria Primary Antibody Concentration: 1:100 Other Working Concentrations: 1:600 Secondary Antibody: Donkey anti-Rabbit-Cy3 Secondary Antibody Concentration: 1:200 Magnification: 20X Exposure Time: 0.5 - 2.0 sec