

Datasheet for ABIN5515521

**anti-Kv2.1/KCNB1 antibody (C-Term)**[Go to Product page](#)**1** Image

## Overview

Quantity:	100 µL
Target:	Kv2.1/KCNB1 (KCNB1)
Binding Specificity:	C-Term
Reactivity:	Human, Mouse, Rat, Cow, Dog, Horse, Pig, Rabbit
Host:	Rabbit
Clonality:	Polyclonal
Conjugate:	This Kv2.1/KCNB1 antibody is un-conjugated
Application:	Western Blotting (WB)

## Product Details

Immunogen:	The immunogen is a synthetic peptide directed towards the C-terminal region of Human KCNB1
Sequence:	MAKTQSQPIL NTKESAAQSK PKEELEMESI PSPVAPLPTR TEGVIDMRSM
Predicted Reactivity:	Cow: 93%, Dog: 86%, Horse: 86%, Human: 100%, Mouse: 85%, Pig: 93%, Rabbit: 86%, Rat: 86%
Characteristics:	This is a rabbit polyclonal antibody against KCNB1. It was validated on Western Blot.
Purification:	Affinity Purified

## Target Details

Target:	Kv2.1/KCNB1 (KCNB1)
Alternative Name:	KCNB1 ( <a href="#">KCNB1 Products</a> )
Background:	Voltage-gated potassium (Kv) channels represent the most complex class of voltage-gated ion

## Target Details

channels from both functional and structural standpoints. Their diverse functions include regulating neurotransmitter release, heart rate, insulin secretion, neuronal excitability, epithelial electrolyte transport, smooth muscle contraction, and cell volume. Four sequence-related potassium channel genes - shaker, shaw, shab, and shal - have been identified in Drosophila, and each has been shown to have human homolog(s). This gene encodes a member of the potassium channel, voltage-gated, shab-related subfamily. This member is a delayed rectifier potassium channel and its activity is modulated by some other family members.

Alias Symbols: KCNB1,

Protein Interaction Partner: STX1A, KCNG3, KCNG4, KCNV1, KCNB2, KCNG1, KCNB1, SRC, SUMO1, NEDD4L, KCNV2, KCNG2, KCNS3, PTPRE, SNAP25, KCNH1,

Protein Size: 858

Gene ID:	3745
NCBI Accession:	<a href="#">NP_004966</a>
UniProt:	<a href="#">Q14721</a>
Pathways:	<a href="#">Synaptic Membrane</a>

## Application Details

Application Notes:	Optimal working dilution should be determined by the investigator.
Restrictions:	For Research Use only

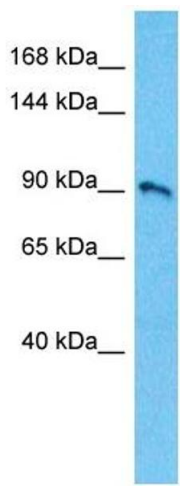
## Handling

Format:	Liquid
Buffer:	Liquid. Purified antibody supplied in 1x PBS buffer with 0.09 % (w/v) sodium azide and 2 % sucrose.
Preservative:	Sodium azide
Precaution of Use:	This product contains Sodium azide: a POISONOUS AND HAZARDOUS SUBSTANCE which should be handled by trained staff only.
Storage:	-20 °C

## Handling

Storage Comment: For short term use, store at 2-8°C up to 1 week. For long term storage, store at -20°C in small aliquots to prevent freeze-thaw cycles.

## Images



### Western Blotting

**Image 1.** Host: Rabbit Target Name: KCNB1 Sample Type: 721\_B Whole Cell lysates Antibody Dilution: 1.0ug/ml