

Datasheet for ABIN5515617  
**anti-PCDHb5 antibody (N-Term)**[Go to Product page](#)

## 1 Image

## Overview

Quantity:	100 µL
Target:	PCDHb5
Binding Specificity:	N-Term
Reactivity:	Human, Mouse, Rat, Cow, Guinea Pig, Rabbit
Host:	Rabbit
Clonality:	Polyclonal
Conjugate:	This PCDHb5 antibody is un-conjugated
Application:	Western Blotting (WB)

## Product Details

Immunogen:	The immunogen is a synthetic peptide directed towards the N-terminal region of Human PCDHB5
Sequence:	QFFQTDLQLT DINDHAPEFP EKEMLLKIPE STQPGTVFPL KIAQDFDIGS
Predicted Reactivity:	Cow: 77%, Guinea Pig: 85%, Human: 100%, Mouse: 92%, Rabbit: 75%, Rat: 100%
Characteristics:	This is a rabbit polyclonal antibody against PCDHB5. It was validated on Western Blot.
Purification:	Affinity Purified

## Target Details

Target:	PCDHb5
Alternative Name:	PCDHB5 ( <a href="#">PCDHb5 Products</a> )

## Target Details

Background:	<p>This gene is a member of the protocadherin beta gene cluster, one of three related gene clusters tandemly linked on chromosome five. The gene clusters demonstrate an unusual genomic organization similar to that of B-cell and T-cell receptor gene clusters. The beta cluster contains 16 genes and 3 pseudogenes, each encoding 6 extracellular cadherin domains and a cytoplasmic tail that deviates from others in the cadherin superfamily. The extracellular domains interact in a homophilic manner to specify differential cell-cell connections. Unlike the alpha and gamma clusters, the transcripts from these genes are made up of only one large exon, not sharing common 3' exons as expected. These neural cadherin-like cell adhesion proteins are integral plasma membrane proteins. Their specific functions are unknown but they most likely play a critical role in the establishment and function of specific cell-cell neural connections.</p> <p>Alias Symbols: PCDHB5,</p> <p>Protein Interaction Partner: UBC, DGKB,</p> <p>Protein Size: 795</p>
-------------	---

Gene ID:	26167
NCBI Accession:	<a href="#">NP_056484</a>
UniProt:	<a href="#">Q9Y5E4</a>

## Application Details

Application Notes:	Optimal working dilution should be determined by the investigator.
Restrictions:	For Research Use only

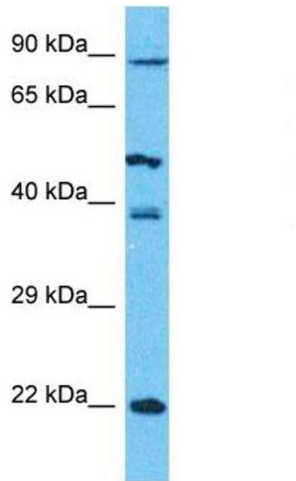
## Handling

Format:	Liquid
Buffer:	Liquid. Purified antibody supplied in 1x PBS buffer with 0.09 % (w/v) sodium azide and 2 % sucrose.
Preservative:	Sodium azide
Precaution of Use:	This product contains Sodium azide: a POISONOUS AND HAZARDOUS SUBSTANCE which should be handled by trained staff only.

## Handling

Storage:	-20 °C
Storage Comment:	For short term use, store at 2-8°C up to 1 week. For long term storage, store at -20°C in small aliquots to prevent freeze-thaw cycles.

## Images



### Western Blotting

**Image 1.** Host: Rabbit Target Name: PCDHB5 Sample Type: 293T Whole Cell lysates Antibody Dilution: 1.0ug/ml