



[Go to Product page](#)

Datasheet for ABIN5515694
anti-PSG8 antibody (C-Term)

1 Image

Overview

Quantity:	100 µL
Target:	PSG8
Binding Specificity:	C-Term
Reactivity:	Human
Host:	Rabbit
Clonality:	Polyclonal
Conjugate:	This PSG8 antibody is un-conjugated
Application:	Western Blotting (WB)

Product Details

Immunogen:	The immunogen is a synthetic peptide directed towards the C-terminal region of Human PSG8
Sequence:	GQKLFIPQIT TKHSGLYACS VRNSATGKES SKSMTVKVSG KRIPVSLAIG
Predicted Reactivity:	Human: 100%
Characteristics:	This is a rabbit polyclonal antibody against PSG8. It was validated on Western Blot.
Purification:	Affinity Purified

Target Details

Target:	PSG8
Alternative Name:	PSG8 (PSG8 Products)
Background:	The human pregnancy-specific glycoproteins (PSGs) are a group of molecules that are mainly

Target Details

produced by the placental syncytiotrophoblasts during pregnancy. PSGs comprise a subgroup of the carcinoembryonic antigen (CEA) family, which belongs to the immunoglobulin superfamily.

Alias Symbols: PSG8,

Protein Size: 426

Gene ID: 440533

NCBI Accession: [NM_182707](#), [NP_874366](#)

UniProt: [Q9UQ74](#)

Application Details

Application Notes: Optimal working dilution should be determined by the investigator.

Restrictions: For Research Use only

Handling

Format: Liquid

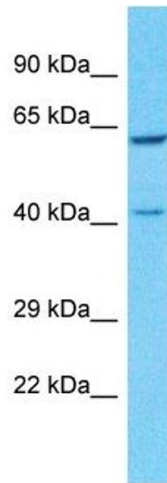
Buffer: Liquid. Purified antibody supplied in 1x PBS buffer with 0.09 % (w/v) sodium azide and 2 % sucrose.

Preservative: Sodium azide

Precaution of Use: This product contains Sodium azide: a POISONOUS AND HAZARDOUS SUBSTANCE which should be handled by trained staff only.

Storage: -20 °C

Storage Comment: For short term use, store at 2-8°C up to 1 week. For long term storage, store at -20°C in small aliquots to prevent freeze-thaw cycles.



Western Blotting

Image 1. Host: Rabbit Target Name: PSG8 Sample Tissue: Human Lung Tumor Antibody Dilution: 1ug/ml