

Datasheet for ABIN5515769
anti-ALDOB antibody (N-Term)[Go to Product page](#)

4 Images

Overview

Quantity:	100 µL
Target:	ALDOB
Binding Specificity:	N-Term
Reactivity:	Human, Mouse, Rat, Rabbit, Guinea Pig, Horse, Dog, Sheep, Cow, Saccharomyces cerevisiae, Zebrafish (Danio rerio)
Host:	Rabbit
Clonality:	Polyclonal
Conjugate:	This ALDOB antibody is un-conjugated
Application:	Western Blotting (WB), Immunohistochemistry (IHC)

Product Details

Immunogen:	The immunogen is a synthetic peptide directed towards the N-terminal region of Human ALDOB
Sequence:	ADESVGTMGN RLQRIKVENT EENRRQFREI LFSVDSSINQ SIGGVILFHE
Predicted Reactivity:	Cow: 100%, Dog: 100%, Guinea Pig: 100%, Horse: 100%, Human: 100%, Mouse: 100%, Rabbit: 100%, Rat: 100%, Sheep: 100%, Yeast: 90%, Zebrafish: 75%
Characteristics:	This is a rabbit polyclonal antibody against ALDOB. It was validated on Western Blot.
Purification:	Affinity Purified

Target Details

Target:	ALDOB
---------	-------

Target Details

Alternative Name: ALDOB ([ALDOB Products](#))

Background: Fructose-1,6-bisphosphate aldolase (EC 4.1.2.13) is a tetrameric glycolytic enzyme that catalyzes the reversible conversion of fructose-1,6-bisphosphate to glyceraldehyde 3-phosphate and dihydroxyacetone phosphate. Vertebrates have 3 aldolase isozymes which are distinguished by their electrophoretic and catalytic properties. Differences indicate that aldolases A, B, and C are distinct proteins, the products of a family of related 'housekeeping' genes exhibiting developmentally regulated expression of the different isozymes. The developing embryo produces aldolase A, which is produced in even greater amounts in adult muscle where it can be as much as 5 % of total cellular protein. In adult liver, kidney and intestine, aldolase A expression is repressed and aldolase B is produced. In brain and other nervous tissue, aldolase A and C are expressed about equally. There is a high degree of homology between aldolase A and C. Defects in ALDOB cause hereditary fructose intolerance.

Alias Symbols: ALDOB, ALDB,

Protein Interaction Partner: BBS7, BBS4, BBS2, BBS1, MUC20, AGXT2, TXN2, UBC, HIVEP1, ALDOA, APP, HSPA8, ALDOB, ATP6V1E1,

Protein Size: 364

Gene ID: 229

NCBI Accession: [NP_000026](#)

UniProt: [P05062](#)

Application Details

Application Notes: Optimal working dilution should be determined by the investigator.

Restrictions: For Research Use only

Handling

Format: Liquid

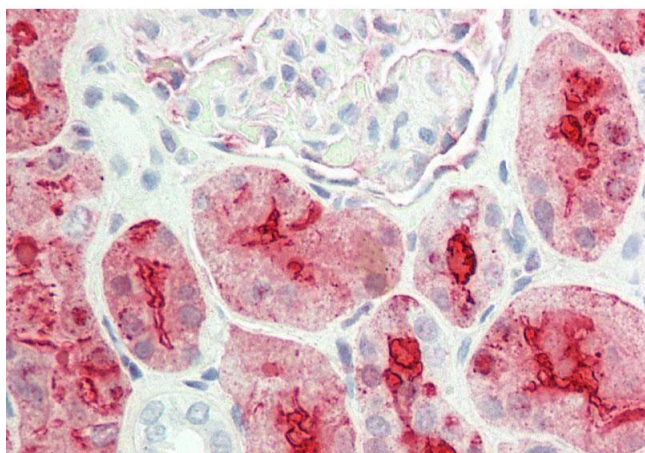
Buffer: Liquid. Purified antibody supplied in 1x PBS buffer with 0.09 % (w/v) sodium azide and 2 % sucrose.

Preservative: Sodium azide

Handling

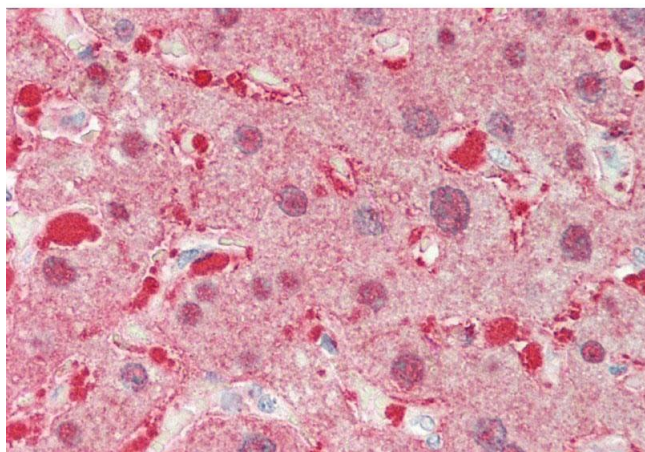
Precaution of Use:	This product contains Sodium azide: a POISONOUS AND HAZARDOUS SUBSTANCE which should be handled by trained staff only.
Storage:	-20 °C
Storage Comment:	For short term use, store at 2-8°C up to 1 week. For long term storage, store at -20°C in small aliquots to prevent freeze-thaw cycles.

Images



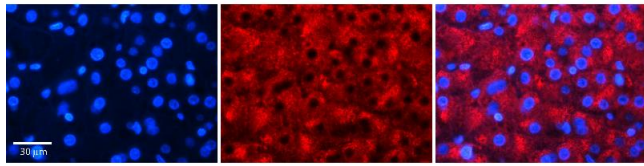
Immunohistochemistry

Image 1. Rabbit Anti-ALDOB antibody Formalin Fixed Paraffin Embedded Tissue: Human Kidney Primary antibody Concentration: 1:100 Secondary Antibody: Donkey anti-Rabbit-Cy3 Secondary Antibody Concentration: 1:200 Magnification: 20x Exposure Time: 0.5-2.0sec



Immunohistochemistry

Image 2. Rabbit Anti-ALDOB antibody Formalin Fixed Paraffin Embedded Tissue: Human Liver Primary antibody Concentration: 1:100 Secondary Antibody: Donkey anti-Rabbit-Cy3 Secondary Antibody Concentration: 1:200 Magnification: 20x Exposure Time: 0.5-2.0sec



Immunohistochemistry

Image 3. Rabbit Anti-ALDOB Antibody Formalin Fixed Paraffin Embedded Tissue: Human Liver Tissue Observed Staining: Cytoplasm in hepatocytes Primary Antibody Concentration: N/A Other Working Concentrations: 1:600 Secondary Antibody: Donkey anti-Rabbit-Cy3 Secondary Antibody Concentration: 1:200 Magnification: 20X Exposure Time: 0.5 - 2.0 sec

Please check the [product details page](#) for more images. Overall 4 images are available for ABIN5515769.