

Datasheet for ABIN5515902
anti-PARM1 antibody (N-Term)[Go to Product page](#)

1 Image

Overview

Quantity:	100 µL
Target:	PARM1
Binding Specificity:	N-Term
Reactivity:	Human
Host:	Rabbit
Clonality:	Polyclonal
Conjugate:	This PARM1 antibody is un-conjugated
Application:	Western Blotting (WB)

Product Details

Immunogen:	The immunogen is a synthetic peptide directed towards the N-terminal region of Human PARM1
Sequence:	GSNWEGTNTD PSPSGFSSTS GGVHLTTTLE EHSSGTPEAG VAATLSQSAA
Predicted Reactivity:	Human: 100%
Characteristics:	This is a rabbit polyclonal antibody against PARM1. It was validated on Western Blot.
Purification:	Affinity purified

Target Details

Target:	PARM1
Alternative Name:	PARM1 (PARM1 Products)

Target Details

Background: PARM1 may regulate TLP1 expression and telomerase activity, thus enabling certain prostatic cells to resist apoptosis.

Alias Symbols: PARM1, UNQ1879/PRO4322,

Protein Size: 310

Gene ID: 25849

NCBI Accession: [NP_056208](#)

UniProt: [Q6UWI2](#)

Application Details

Application Notes: Optimal working dilution should be determined by the investigator.

Restrictions: For Research Use only

Handling

Format: Liquid

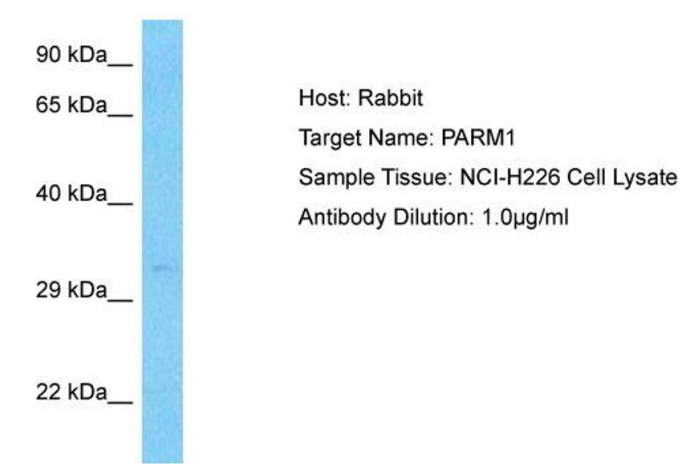
Buffer: Liquid. Purified antibody supplied in 1x PBS buffer with 0.09 % (w/v) sodium azide and 2 % sucrose.

Preservative: Sodium azide

Precaution of Use: This product contains Sodium azide: a POISONOUS AND HAZARDOUS SUBSTANCE which should be handled by trained staff only.

Storage: -20 °C

Storage Comment: For short term use, store at 2-8°C up to 1 week. For long term storage, store at -20°C in small aliquots to prevent freeze-thaw cycles.



Western Blotting

Image 1. Host: Rabbit Target Name: PARM1 Sample Type: NCI-H226 Whole Cell lysates Antibody Dilution: 1.0ug/ml