

Datasheet for ABIN5516086  
**anti-LETM1 antibody (C-Term)**



[Go to Product page](#)

1 Image

## Overview

Quantity:	100 µL
Target:	LETM1
Binding Specificity:	C-Term
Reactivity:	Human, Mouse, Rat, Dog, Cow, Guinea Pig, Horse, Rabbit, Zebrafish (Danio rerio)
Host:	Rabbit
Clonality:	Polyclonal
Conjugate:	This LETM1 antibody is un-conjugated
Application:	Western Blotting (WB)

## Product Details

Immunogen:	The immunogen is a synthetic peptide directed towards the C-terminal region of Human LETM1
Sequence:	EIDILSDACS KLQEQKSLT KEKEELELLK EDVQDYSEDL QEIKKELSKT
Predicted Reactivity:	Cow: 100%, Dog: 93%, Guinea Pig: 100%, Horse: 100%, Human: 100%, Mouse: 100%, Rabbit: 93%, Rat: 100%, Zebrafish: 86%
Characteristics:	This is a rabbit polyclonal antibody against LETM1. It was validated on Western Blot.
Purification:	Affinity Purified

## Target Details

Target:	LETM1
Alternative Name:	LETM1 ( <a href="#">LETM1 Products</a> )

## Target Details

Background:	<p>This gene encodes a protein that is localized to the inner mitochondrial membrane. The protein functions to maintain the mitochondrial tubular shapes and is required for normal mitochondrial morphology and cellular viability. Mutations in this gene cause Wolf-Hirschhorn syndrome, a complex malformation syndrome caused by the deletion of parts of the distal short arm of chromosome 4. Related pseudogenes have been identified on chromosomes 8, 15 and 19.</p> <p>Alias Symbols: LETM1,</p> <p>Protein Interaction Partner: PSMA3, UBC, LATS2, C12orf57, SYNCRIP, ILF3, TBK1, ICT1,</p> <p>Protein Size: 739</p>
-------------	----------------------------------------------------------------------------------------------------------------------------------------------------------------------------------------------------------------------------------------------------------------------------------------------------------------------------------------------------------------------------------------------------------------------------------------------------------------------------------------------------------------------------------------------------------------------------------------------------------------------------------

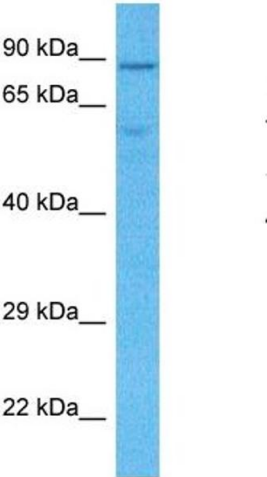
Gene ID:	3954
NCBI Accession:	<a href="#">NP_036450</a>
UniProt:	<a href="#">O95202</a>

## Application Details

Application Notes:	Optimal working dilution should be determined by the investigator.
Restrictions:	For Research Use only

## Handling

Format:	Liquid
Buffer:	Liquid. Purified antibody supplied in 1x PBS buffer with 0.09 % (w/v) sodium azide and 2 % sucrose.
Preservative:	Sodium azide
Precaution of Use:	This product contains Sodium azide: a POISONOUS AND HAZARDOUS SUBSTANCE which should be handled by trained staff only.
Storage:	-20 °C
Storage Comment:	For short term use, store at 2-8°C up to 1 week. For long term storage, store at -20°C in small aliquots to prevent freeze-thaw cycles.



**Western Blotting**

**Image 1.** Host: Rabbit Target Name: LETM1 Sample Type: MDA-MB-435s Whole Cell lysates Antibody Dilution: 1.0ug/ml