

Datasheet for ABIN5516164
anti-SLC22A7 antibody (N-Term)



[Go to Product page](#)

1 Image

Overview

Quantity:	100 µL
Target:	SLC22A7
Binding Specificity:	N-Term
Reactivity:	Human, Mouse, Rat, Horse, Rabbit, Cow, Guinea Pig, Dog, Pig
Host:	Rabbit
Clonality:	Polyclonal
Conjugate:	This SLC22A7 antibody is un-conjugated
Application:	Western Blotting (WB)

Product Details

Immunogen:	The immunogen is a synthetic peptide directed towards the N-terminal region of Human SLC22A7
Sequence:	MGFEELLEQV GGFGPFQLRN VALLALPRVL LPLHFLLPIF LAAVPAHRCA
Predicted Reactivity:	Cow: 100%, Dog: 79%, Guinea Pig: 83%, Horse: 93%, Human: 100%, Mouse: 100%, Pig: 92%, Rabbit: 100%, Rat: 100%
Characteristics:	This is a rabbit polyclonal antibody against SLC22A7. It was validated on Western Blot.
Purification:	Affinity Purified

Target Details

Target:	SLC22A7
---------	---------

Target Details

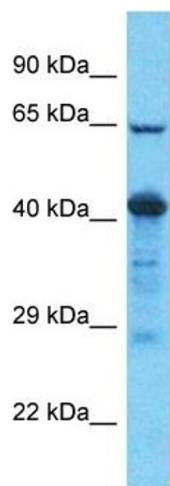
Alternative Name:	SLC22A7 (SLC22A7 Products)
Background:	<p>The protein encoded by this gene is involved in the sodium-independent transport and excretion of organic anions, some of which are potentially toxic. The encoded protein is an integral membrane protein and appears to be localized to the basolateral membrane of the kidney. Alternatively spliced transcript variants encoding different isoforms have been described.</p> <p>Alias Symbols: SLC22A7, NLT, OAT2,</p> <p>Protein Size: 548</p>
Gene ID:	10864
NCBI Accession:	NM_153320 , NP_696961
UniProt:	Q9Y694

Application Details

Application Notes:	Optimal working dilution should be determined by the investigator.
Restrictions:	For Research Use only

Handling

Format:	Liquid
Buffer:	Liquid. Purified antibody supplied in 1x PBS buffer with 0.09 % (w/v) sodium azide and 2 % sucrose.
Preservative:	Sodium azide
Precaution of Use:	This product contains Sodium azide: a POISONOUS AND HAZARDOUS SUBSTANCE which should be handled by trained staff only.
Storage:	-20 °C
Storage Comment:	For short term use, store at 2-8°C up to 1 week. For long term storage, store at -20°C in small aliquots to prevent freeze-thaw cycles.



Western Blotting

Image 1. Host: Rabbit Target Name: SLC22A7 Sample
Tissue: Human Esophagus Tumor Antibody Dilution:
1ug/ml