

Datasheet for ABIN5516349
anti-PHF16 antibody (C-Term)



[Go to Product page](#)

1 Image

Overview

Quantity:	100 µL
Target:	PHF16
Binding Specificity:	C-Term
Reactivity:	Human, Guinea Pig, Mouse, Dog, Horse, Cow, Rabbit, Rat
Host:	Rabbit
Clonality:	Polyclonal
Conjugate:	This PHF16 antibody is un-conjugated
Application:	Western Blotting (WB)

Product Details

Immunogen:	The immunogen is a synthetic peptide directed towards the C-terminal region of Human JADE3
Sequence:	ELSDSEAESD GNKEKVRVRK DSSDRENPPH DSRRDCHGKS KTHPLSHSSM
Predicted Reactivity:	Cow: 92%, Dog: 92%, Guinea Pig: 93%, Horse: 92%, Human: 100%, Mouse: 83%, Rabbit: 85%, Rat: 100%
Characteristics:	This is a rabbit polyclonal antibody against JADE3. It was validated on Western Blot.
Purification:	Affinity purified

Target Details

Target:	PHF16
Alternative Name:	JADE3 (PHF16 Products)

Target Details

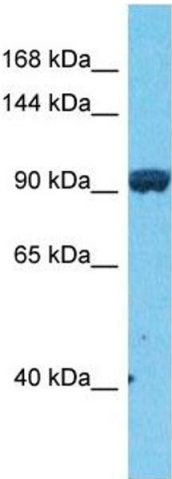
Background:	<p>This gene encodes a member of a family of large proteins containing PHD (plant homeo domain)-type zinc fingers. The encoded protein may be associated in a nuclear complex that functions in histone H4 acetylation. Alternative splicing results in multiple transcript variants encoding the same protein.</p> <p>Alias Symbols: JADE3, KIAA0215, PHF16,</p> <p>Protein Interaction Partner: MAGEA11, UBC, HIST3H3, ELAVL1, ING5, ING4, KAT7,</p> <p>Protein Size: 823</p>
Gene ID:	9767
NCBI Accession:	NP_055550
UniProt:	Q92613

Application Details

Application Notes:	Optimal working dilution should be determined by the investigator.
Restrictions:	For Research Use only

Handling

Format:	Liquid
Buffer:	Liquid. Purified antibody supplied in 1x PBS buffer with 0.09 % (w/v) sodium azide and 2 % sucrose.
Preservative:	Sodium azide
Precaution of Use:	This product contains Sodium azide: a POISONOUS AND HAZARDOUS SUBSTANCE which should be handled by trained staff only.
Storage:	-20 °C
Storage Comment:	For short term use, store at 2-8°C up to 1 week. For long term storage, store at -20°C in small aliquots to prevent freeze-thaw cycles.



Western Blotting

Image 1. Host: Rabbit Target Name: JADE3 Sample Type: COLO205 Whole Cell lysates Antibody Dilution: 1.0ug/ml