

Datasheet for ABIN5516453  
**anti-ABCA10 antibody (C-Term)**[Go to Product page](#)

## 1 Image

## Overview

Quantity:	100 µL
Target:	ABCA10
Binding Specificity:	C-Term
Reactivity:	Human
Host:	Rabbit
Clonality:	Polyclonal
Conjugate:	This ABCA10 antibody is un-conjugated
Application:	Western Blotting (WB)

## Product Details

Immunogen:	The immunogen is a synthetic peptide directed towards the C terminal region of human ABCA10
Sequence:	HEIFENEINP EHSSDDSFEP VSPEFHGKEA IRIRNVIKEY NGKTGKVEAL
Predicted Reactivity:	Horse: 79%, Human: 100%
Purification:	Affinity purified

## Target Details

Target:	ABCA10
Alternative Name:	ABCA10 ( <a href="#">ABCA10 Products</a> )
Background:	The membrane-associated protein encoded by this gene is a member of the superfamily of

## Target Details

ATP-binding cassette (ABC) transporters. ABC proteins transport various molecules across extra- and intracellular membranes. ABC genes are divided into seven distinct subfamilies (ABC1, MDR/TAP, MRP, ALD, OABP, GCN20, and White). This encoded protein is a member of the ABC1 subfamily. Members of the ABC1 subfamily comprise the only major ABC subfamily found exclusively in multicellular eukaryotes. This gene is clustered among 4 other ABC1 family members on 17q24, but neither the substrate nor the function of this gene is known.

Alias Symbols: EST698739

Protein Interaction Partner: COPS5, CUL4A,

Protein Size: 466

Gene ID:	10349
----------	-------

## Application Details

Application Notes:	Optimal working dilution should be determined by the investigator.
--------------------	--

Restrictions:	For Research Use only
---------------	-----------------------

## Handling

Format:	Liquid
---------	--------

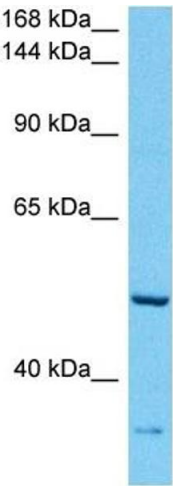
Buffer:	Liquid. Purified antibody supplied in 1x PBS buffer with 0.09 % (w/v) sodium azide and 2 % sucrose.
---------	---

Preservative:	Sodium azide
---------------	--------------

Precaution of Use:	This product contains Sodium azide: a POISONOUS AND HAZARDOUS SUBSTANCE which should be handled by trained staff only.
--------------------	--

Storage:	-20 °C
----------	--------

Storage Comment:	For short term use, store at 2-8°C up to 1 week. For long term storage, store at -20°C in small aliquots to prevent freeze-thaw cycles.
------------------	---



Western Blotting

**Image 1.** Host: Rabbit Target Name: ABCA10 Sample  
Tissue: Human Esophagus Tumor lysates Antibody  
Dilution: 1ug/ml