

Datasheet for ABIN5516638
anti-CHRNA10 antibody (N-Term)



[Go to Product page](#)

1 Image

Overview

Quantity:	100 µL
Target:	CHRNA10
Binding Specificity:	N-Term
Reactivity:	Human, Mouse, Rat, Cow, Guinea Pig, Horse
Host:	Rabbit
Clonality:	Polyclonal
Conjugate:	This CHRNA10 antibody is un-conjugated
Application:	Western Blotting (WB)

Product Details

Immunogen:	The immunogen for Anti-CHRNA10 antibody is: synthetic peptide directed towards the N-terminal region of Human ACH10
Sequence:	SHHLSLGLLL LFLLPAECLG AEGRLALKLF RDLFANYTSA LRPVADTDQT
Predicted Reactivity:	Cow: 93%, Guinea Pig: 93%, Horse: 93%, Human: 100%, Mouse: 93%, Rat: 93%
Characteristics:	This is a rabbit polyclonal antibody against ACH10. It was validated on Western Blot.
Purification:	Affinity purified

Target Details

Target:	CHRNA10
Alternative Name:	CHRNA10 (CHRNA10 Products)

Target Details

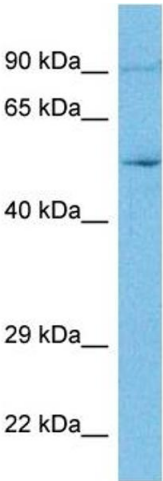
Background:	Protein Size: 450
Gene ID:	57053
NCBI Accession:	NP_065135
UniProt:	Q9GZZ6
Pathways:	Sensory Perception of Sound , Synaptic Membrane

Application Details

Application Notes:	Optimal working dilution should be determined by the investigator.
Restrictions:	For Research Use only

Handling

Format:	Liquid
Buffer:	Liquid. Purified antibody supplied in 1x PBS buffer with 0.09 % (w/v) sodium azide and 2 % sucrose.
Preservative:	Sodium azide
Precaution of Use:	This product contains Sodium azide: a POISONOUS AND HAZARDOUS SUBSTANCE which should be handled by trained staff only.
Storage:	-20 °C
Storage Comment:	For short term use, store at 2-8°C up to 1 week. For long term storage, store at -20°C in small aliquots to prevent freeze-thaw cycles.



Western Blotting

Image 1. WB Suggested Anti-ACH10 antibody Titration: 1 ug/mL Sample Type: Human MCF7 Whole Cell