

Datasheet for ABIN5516647
anti-EME2 antibody (Middle Region)



[Go to Product page](#)

1 Image

Overview

Quantity:	100 µL
Target:	EME2
Binding Specificity:	Middle Region
Reactivity:	Human
Host:	Rabbit
Clonality:	Polyclonal
Application:	Western Blotting (WB)

Product Details

Immunogen:	The immunogen is a synthetic peptide directed towards the middle region of Human EME2
Sequence:	TTARPHLAVI GLDAYLWSRQ HVSRTGQQPE SPKVAGAEVA VSWPEVEEVR
Predicted Reactivity:	Human: 100%
Characteristics:	This is a rabbit polyclonal antibody against EME2. It was validated on Western Blot.
Purification:	Affinity Purified

Target Details

Target:	EME2
Alternative Name:	EME2 (EME2 Products)
Background:	EME2 forms a heterodimer with MUS81 that functions as an XPF-type flap/fork endonuclease in DNA repair .

Target Details

Protein Interaction Partner: C19orf40, MUS81, FANCM,

Protein Size: 379

Gene ID: 197342

NCBI Accession: [NP_001244299](#)

UniProt: [A4GXA9](#)

Application Details

Application Notes: Optimal working dilution should be determined by the investigator.

Restrictions: For Research Use only

Handling

Format: Liquid

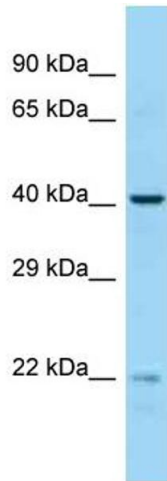
Buffer: Liquid. Purified antibody supplied in 1x PBS buffer with 0.09 % (w/v) sodium azide and 2 % sucrose.

Preservative: Sodium azide

Precaution of Use: This product contains Sodium azide: a POISONOUS AND HAZARDOUS SUBSTANCE which should be handled by trained staff only.

Storage: -20 °C

Storage Comment: For short term use, store at 2-8°C up to 1 week. For long term storage, store at -20°C in small aliquots to prevent freeze-thaw cycles.



Western Blotting

Image 1. Host: Rabbit Target Name: EME2 Sample Type: MCF7 Whole cell lysates Antibody Dilution: 1.0ug/ml