

Datasheet for ABIN5516677

anti-FZD10 antibody**3** Images[Go to Product page](#)

Overview

Quantity:	100 µL
Target:	FZD10
Reactivity:	Human, Mouse, Cow, Dog, Pig, Horse
Host:	Rabbit
Clonality:	Polyclonal
Conjugate:	This FZD10 antibody is un-conjugated
Application:	Immunofluorescence (IF)

Product Details

Immunogen:	The immunogen is a synthetic peptide directed towards the following sequence GMWIWTSKTLQSWQQVCSRRLKKKSRRKPASVITSGGIYKKAQHPQKTHH
Sequence:	GMWIWTSKTL QSWQQVCSRRLKKKSRRKPA SVITSGGIYK KAQHPQKTHH
Predicted Reactivity:	Cow: 92%, Dog: 92%, Horse: 92%, Human: 100%, Mouse: 92%, Pig: 100%
Purification:	Affinity Purified

Target Details

Target:	FZD10
Alternative Name:	FZD10 (FZD10 Products)
Background:	This gene is a member of the frizzled gene family. Members of this family encode 7-transmembrane domain proteins that are receptors for the Wingless type MMTV integration site family of signaling proteins. Most frizzled receptors are coupled to the beta-catenin

Target Details

canonical signaling pathway. Using array analysis, expression of this intronless gene is significantly up-regulated in two cases of primary colon cancer.

Alias Symbols: Fz10, FzE7, CD350, FZ-10, hFz10,

Protein Size: 581

Gene ID: 11211

NCBI Accession: [NM_007197](#), [NP_009128](#)

UniProt: [Q9ULW2](#)

Pathways: [WNT Signaling](#)

Application Details

Application Notes: Optimal working dilution should be determined by the investigator.

Restrictions: For Research Use only

Handling

Format: Liquid

Buffer: Liquid. Purified antibody supplied in 1x PBS buffer with 0.09 % (w/v) sodium azide and 2 % sucrose.

Preservative: Sodium azide

Precaution of Use: This product contains Sodium azide: a POISONOUS AND HAZARDOUS SUBSTANCE which should be handled by trained staff only.

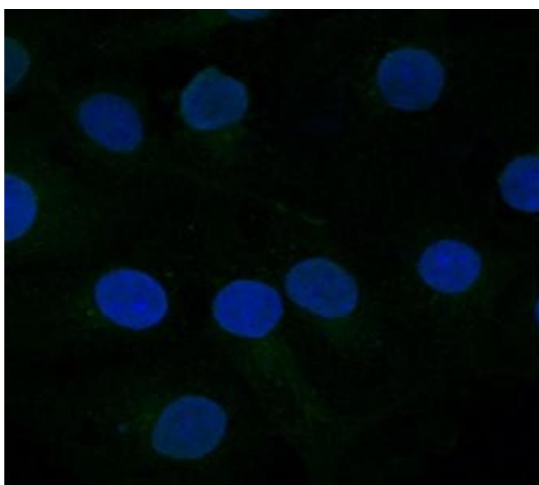
Storage: -20 °C

Storage Comment: For short term use, store at 2-8°C up to 1 week. For long term storage, store at -20°C in small aliquots to prevent freeze-thaw cycles.



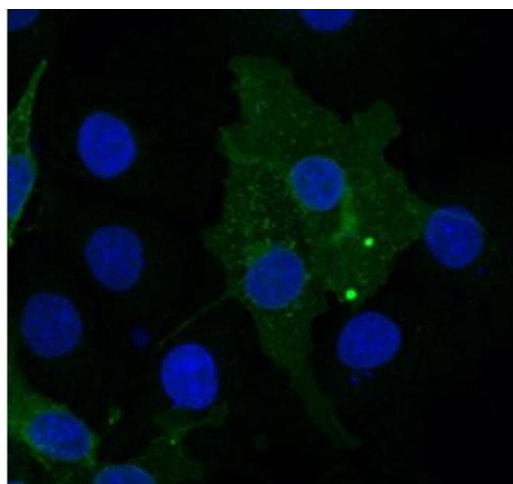
Western Blotting

Image 1. Host: Rabbit Target Name: FZD10 Sample Tissue: Human MCF7 Whole Cell Antibody Dilution: 1ug/ml



Immunofluorescence

Image 2. FZD10 Antibody Sample type: COS7 cells mock transfected Primary Ab dilution: 1:333 Secondary Ab: anti-rabbit-Cy2 Secondary Ab dilution: 1:500 Blue: DAPI Green: FZD10 Data submitted by: Lisa Galli/Laura Burrus San Francisco State University



Immunofluorescence

Image 3. FZD10 Antibody Sample type: COS7 cells transfected with chick FZD10 Primary Ab dilution: 1:333 Secondary Ab: anti-rabbit-Cy2 Secondary Ab dilution: 1:500 Blue: DAPI Green: FZD10 Data submitted by: Lisa Galli/Laura Burrus San Francisco State University