

Datasheet for ABIN5516930
anti-EXTL2 antibody (C-Term)



[Go to Product page](#)

1 Image

Overview

| | |
|----------------------|--|
| Quantity: | 100 µL |
| Target: | EXTL2 |
| Binding Specificity: | C-Term |
| Reactivity: | Human, Mouse, Rat, Guinea Pig, Horse, Cow, Dog |
| Host: | Rabbit |
| Clonality: | Polyclonal |
| Conjugate: | This EXTL2 antibody is un-conjugated |
| Application: | Western Blotting (WB) |

Product Details

| | |
|-----------------------|--|
| Immunogen: | The immunogen is a synthetic peptide directed towards the C-terminal region of Human EXTL2 |
| Sequence: | GSFEMQAPGS GNGDQYSMVL IGASFFNSKY LELFQRQPAA VHALIDDTQN |
| Predicted Reactivity: | Cow: 86%, Dog: 93%, Guinea Pig: 100%, Horse: 100%, Human: 100%, Mouse: 100%, Rat: 93% |
| Characteristics: | This is a rabbit polyclonal antibody against EXTL2. It was validated on Western Blot. |
| Purification: | Affinity Purified |

Target Details

| | |
|-------------------|---|
| Target: | EXTL2 |
| Alternative Name: | EXTL2 (EXTL2 Products) |
| Background: | EXTL2 is a glycosyltransferase required for the biosynthesis of heparan-sulfate and responsible |

Target Details

for the alternating addition of beta-1-4-linked glucuronic acid (GlcA) and alpha-1-4-linked N-acetylglucosamine (GlcNAc) units to nascent heparan sulfate chains.

Alias Symbols: Name=EXTL2,

Protein Size: 330

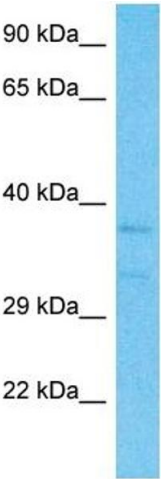
| | |
|-----------------|------------------------------|
| Gene ID: | 2135 |
| NCBI Accession: | XP_005270678 |
| UniProt: | Q9UBQ6 |

Application Details

| | |
|--------------------|--|
| Application Notes: | Optimal working dilution should be determined by the investigator. |
| Restrictions: | For Research Use only |

Handling

| | |
|--------------------|---|
| Format: | Liquid |
| Buffer: | Liquid. Purified antibody supplied in 1x PBS buffer with 0.09 % (w/v) sodium azide and 2 % sucrose. |
| Preservative: | Sodium azide |
| Precaution of Use: | This product contains Sodium azide: a POISONOUS AND HAZARDOUS SUBSTANCE which should be handled by trained staff only. |
| Storage: | -20 °C |
| Storage Comment: | For short term use, store at 2-8°C up to 1 week. For long term storage, store at -20°C in small aliquots to prevent freeze-thaw cycles. |



Western Blotting

Image 1. Host: Rabbit Target Name: EXTL2 Sample Type: Fetal Kidney lysates Antibody Dilution: 1.0ug/ml