

Datasheet for ABIN5516942  
**anti-KLHL6 antibody (N-Term)**[Go to Product page](#)

## 1 Image

## Overview

Quantity:	100 µL
Target:	KLHL6
Binding Specificity:	N-Term
Reactivity:	Human, Mouse, Rat, Cow, Dog, Rabbit, Horse, Guinea Pig
Host:	Rabbit
Clonality:	Polyclonal
Conjugate:	This KLHL6 antibody is un-conjugated
Application:	Western Blotting (WB)

## Product Details

Immunogen:	The immunogen is a synthetic peptide directed towards the N-terminal region of Human KLHL6
Sequence:	VGILRLADTH SLDSLKKQVQ SYIIQNFVQI LNSEEFLDLP VDTLHHILKS
Predicted Reactivity:	Cow: 100%, Dog: 100%, Guinea Pig: 100%, Horse: 100%, Human: 100%, Mouse: 93%, Rabbit: 100%, Rat: 100%
Characteristics:	This is a rabbit polyclonal antibody against KLHL6. It was validated on Western Blot.
Purification:	Affinity Purified

## Target Details

Target:	KLHL6
Alternative Name:	KLHL6 ( <a href="#">KLHL6 Products</a> )

## Target Details

Background: KLHL6 involved in B-lymphocyte antigen receptor signaling and germinal center formation (By similarity).

Alias Symbols: KLHL6,

Protein Interaction Partner: PPP1R1B, HSP90AA1, UBC,

Protein Size: 621

Gene ID: 89857

NCBI Accession: [NP\\_569713](#)

UniProt: [Q8WZ60](#)

## Application Details

Application Notes: Optimal working dilution should be determined by the investigator.

Restrictions: For Research Use only

## Handling

Format: Liquid

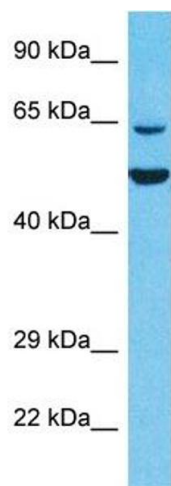
Buffer: Liquid. Purified antibody supplied in 1x PBS buffer with 0.09 % (w/v) sodium azide and 2 % sucrose.

Preservative: Sodium azide

Precaution of Use: This product contains Sodium azide: a POISONOUS AND HAZARDOUS SUBSTANCE which should be handled by trained staff only.

Storage: -20 °C

Storage Comment: For short term use, store at 2-8°C up to 1 week. For long term storage, store at -20°C in small aliquots to prevent freeze-thaw cycles.



Western Blotting

**Image 1.** Host: Rabbit Target Name: KLHL6 Sample Type: 293T Whole Cell lysates Antibody Dilution: 1ug/ml