

Datasheet for ABIN5517041

anti-FBXL19 antibody (Middle Region)



[Go to Product page](#)

1 Image

Overview

Quantity:	100 µL
Target:	FBXL19
Binding Specificity:	Middle Region
Reactivity:	Human, Mouse, Cow, Dog, Guinea Pig, Horse, Rabbit, Rat
Host:	Rabbit
Clonality:	Polyclonal
Conjugate:	This FBXL19 antibody is un-conjugated
Application:	Western Blotting (WB)

Product Details

Immunogen:	The immunogen is a synthetic peptide directed towards the middle region of Human FBXL19
Sequence:	EGRTSKDSGE GPGRRRRADNG EEGASLGSGW KLTEEPPLPP PPPRRKGPLP
Predicted Reactivity:	Cow: 100%, Dog: 100%, Guinea Pig: 100%, Horse: 100%, Human: 100%, Mouse: 93%, Rabbit: 100%, Rat: 100%
Characteristics:	This is a rabbit polyclonal antibody against FBXL19. It was validated on Western Blot.
Purification:	Affinity Purified

Target Details

Target:	FBXL19
Alternative Name:	FBXL19 (FBXL19 Products)

Target Details

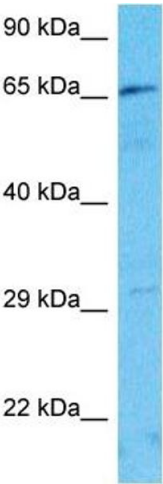
Background:	FBXL19 is a substrate-recognition component of the SCF (SKP1-CUL1-F-box protein)-type E3 ubiquitin ligase complex (By similarity). Alias Symbols: FBXL19, FBL19, Protein Interaction Partner: RAC3, STRADA, EPS15P1, WDR44, SKP1, COL11A1, TRIM29, CBFA2T2, TRIM27, Protein Size: 651
Gene ID:	54620

Application Details

Application Notes:	Optimal working dilution should be determined by the investigator.
Restrictions:	For Research Use only

Handling

Format:	Liquid
Buffer:	Liquid. Purified antibody supplied in 1x PBS buffer with 0.09 % (w/v) sodium azide and 2 % sucrose.
Preservative:	Sodium azide
Precaution of Use:	This product contains Sodium azide: a POISONOUS AND HAZARDOUS SUBSTANCE which should be handled by trained staff only.
Storage:	-20 °C
Storage Comment:	For short term use, store at 2-8°C up to 1 week. For long term storage, store at -20°C in small aliquots to prevent freeze-thaw cycles.



Western Blotting

Image 1. Host: Rabbit Target Name: FBXL19 Sample Type: Jurkat Whole Cell lysates Antibody Dilution: 1.0ug/ml