

Datasheet for ABIN5517103
anti-MEAF6 antibody (C-Term)



[Go to Product page](#)

1 Image

Overview

Quantity:	100 µL
Target:	MEAF6
Binding Specificity:	C-Term
Reactivity:	Human, Mouse, Rat, Cow, Zebrafish (Danio rerio), Dog, Guinea Pig, Horse, Rabbit
Host:	Rabbit
Clonality:	Polyclonal
Conjugate:	This MEAF6 antibody is un-conjugated
Application:	Western Blotting (WB)

Product Details

Immunogen:	The immunogen is a synthetic peptide directed towards the C-terminal region of Human EAF6
Sequence:	LIEKREPGSG TESDTSPDFH NQENEPSQED PEDLDGSGVQG VKPQKAASST
Predicted Reactivity:	Cow: 100%, Dog: 100%, Guinea Pig: 100%, Horse: 100%, Human: 100%, Mouse: 100%, Rabbit: 100%, Rat: 100%, Zebrafish: 86%
Characteristics:	This is a rabbit polyclonal antibody against EAF6. It was validated on Western Blot.
Purification:	Affinity purified

Target Details

Target:	MEAF6
Alternative Name:	EAF6 (MEAF6 Products)

Target Details

Background:	<p>This gene encodes a nuclear protein involved in transcriptional activation. The encoded protein may form a component of several different histone acetyltransferase complexes. There is a pseudogene for this gene on chromosome 2. Alternative splicing results in multiple transcript variants.</p> <p>Alias Symbols: MEAF6, C1orf149, EAF6,</p> <p>Protein Interaction Partner: PLEKHF2, TRIM54, LDOC1, UBC, FXR2, H2AFZ, ELAVL1, SUMO2, JADE1, KAT5, tat, MRGBP, ING5, KAT6A, BRPF1, CCDC85B, L3MBTL2, ING3, ING4, KAT7,</p> <p>Protein Size: 191</p>
-------------	--

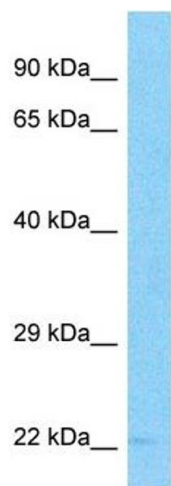
Gene ID:	64769
UniProt:	Q9HAF1

Application Details

Application Notes:	Optimal working dilution should be determined by the investigator.
Restrictions:	For Research Use only

Handling

Format:	Liquid
Buffer:	Liquid. Purified antibody supplied in 1x PBS buffer with 0.09 % (w/v) sodium azide and 2 % sucrose.
Preservative:	Sodium azide
Precaution of Use:	This product contains Sodium azide: a POISONOUS AND HAZARDOUS SUBSTANCE which should be handled by trained staff only.
Storage:	-20 °C
Storage Comment:	For short term use, store at 2-8°C up to 1 week. For long term storage, store at -20°C in small aliquots to prevent freeze-thaw cycles.



Western Blotting

Image 1. Host: Rabbit Target Name: EAF6 Sample Type: COLO205 Whole Cell lysates Antibody Dilution: 1.0ug/ml