



[Go to Product page](#)

Datasheet for ABIN5517110
anti-MCM6 antibody (Middle Region)

2 Images

Overview

Quantity:	100 µL
Target:	MCM6
Binding Specificity:	Middle Region
Reactivity:	Human, Mouse, Rat, Dog, Cow, Guinea Pig, Horse, Rabbit, Zebrafish (Danio rerio)
Host:	Rabbit
Clonality:	Polyclonal
Conjugate:	This MCM6 antibody is un-conjugated
Application:	Western Blotting (WB)

Product Details

Immunogen:	The immunogen is a synthetic peptide directed towards the middle region of Human MCM6
Sequence:	CVAPTNPFRFG GKELRDEEQT AESIKNQMTV KEWEKVFEMS QDKNLYHNLC
Predicted Reactivity:	Cow: 100%, Dog: 100%, Guinea Pig: 100%, Horse: 100%, Human: 100%, Mouse: 100%, Rabbit: 100%, Rat: 100%, Zebrafish: 93%
Characteristics:	This is a rabbit polyclonal antibody against MCM6. It was validated on Western Blot.
Purification:	Affinity Purified

Target Details

Target:	MCM6
Alternative Name:	MCM6 (MCM6 Products)

Target Details

Background: The protein encoded by this gene is one of the highly conserved mini-chromosome maintenance proteins (MCM) that are essential for the initiation of eukaryotic genome replication. The hexameric protein complex formed by the MCM proteins is a key component of the pre-replication complex (pre_RC) and may be involved in the formation of replication forks and in the recruitment of other DNA replication related proteins. The MCM complex consisting of this protein and MCM2, 4 and 7 proteins possesses DNA helicase activity, and may act as a DNA unwinding enzyme. The phosphorylation of the complex by CDC2 kinase reduces the helicase activity, suggesting a role in the regulation of DNA replication. Single nucleotide polymorphisms in the intron regions of this gene are associated with differential transcriptional activation of the promoter of the neighboring lactase gene and, thereby, influence lactose intolerance in early adulthood.

Alias Symbols: MCM6,

Protein Interaction Partner: MCM10, HUWE1, SNRPB2, MCM2, NUDT2, ZBTB9, FAM161A, UBC, SUMO2, SUMO3, MCMBP, POLK, MCM4, MCM3, KPNA3, HSP90AB1, CDKN2A, ACLY, CAP1, ING5, MCM6, BAG3, TONSL, MMS22L, ASF1B, SMC1A, MCM7, CCNA1, VCAM1, ITGA4, FN1, gag-pol, GMNN, ORC6, DBF4, CDC7, PAXIP1, TP5

Protein Size: 821

Gene ID: 4175

UniProt: [Q14566](#)

Pathways: [DNA Damage Repair](#), [Mitotic G1-G1/S Phases](#), [DNA Replication](#), [Synthesis of DNA](#)

Application Details

Application Notes: Optimal working dilution should be determined by the investigator.

Restrictions: For Research Use only

Handling

Format: Liquid

Buffer: Liquid. Purified antibody supplied in 1x PBS buffer with 0.09 % (w/v) sodium azide and 2 % sucrose.

Preservative: Sodium azide

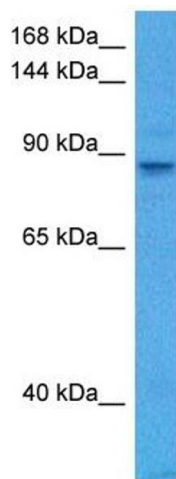
Handling

Precaution of Use: This product contains Sodium azide: a POISONOUS AND HAZARDOUS SUBSTANCE which should be handled by trained staff only.

Storage: -20 °C

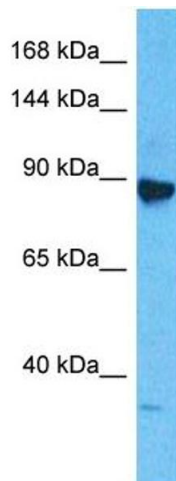
Storage Comment: For short term use, store at 2-8°C up to 1 week. For long term storage, store at -20°C in small aliquots to prevent freeze-thaw cycles.

Images



Western Blotting

Image 1. Host: Mouse Target Name: MCM6 Sample Tissue: Mouse Testis Antibody Dilution: 1ug/ml



Western Blotting

Image 2. Host: Rabbit Target Name: MCM6 Sample Type: Jurkat Whole Cell lysates Antibody Dilution: 1.0ug/ml