

Datasheet for ABIN5517203
anti-NDUFB11 antibody (N-Term)

2 Images

[Go to Product page](#)

Overview

Quantity:	100 µL
Target:	NDUFB11
Binding Specificity:	N-Term
Reactivity:	Human, Mouse, Rat, Cow, Dog, Guinea Pig, Horse, Pig, Rabbit
Host:	Rabbit
Clonality:	Polyclonal
Conjugate:	This NDUFB11 antibody is un-conjugated
Application:	Western Blotting (WB)

Product Details

Immunogen:	The immunogen is a synthetic peptide directed towards the N-terminal region of Human NDUFB11
Sequence:	PSAVAGKRPP EPTTPWQEDP EPEDENLYEK NPDSHGYDKD PVLDVWNMRL
Predicted Reactivity:	Cow: 100%, Dog: 93%, Guinea Pig: 86%, Horse: 86%, Human: 100%, Mouse: 86%, Pig: 93%, Rabbit: 86%, Rat: 93%
Characteristics:	This is a rabbit polyclonal antibody against NDUFB11. It was validated on Western Blot.
Purification:	Affinity Purified

Target Details

Target:	NDUFB11
---------	---------

Target Details

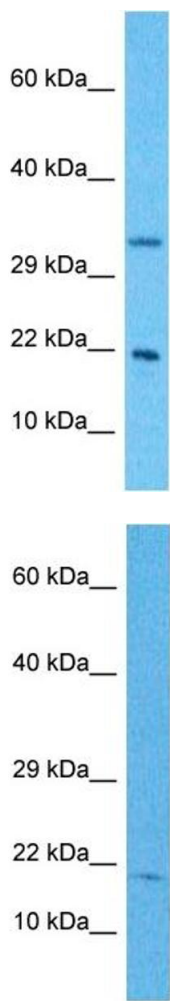
Alternative Name:	NDUFB11 (NDUFB11 Products)
Background:	<p>NDUFB11 is a component of mitochondrial complex I. Complex I catalyzes the first step in the electron transport chain, the transfer of 2 electrons from NADH to ubiquinone, coupled to the translocation of 4 protons across the membrane.</p> <p>Alias Symbols: NDUFB11, UNQ111/PRO1064,</p> <p>Protein Interaction Partner: FATE1, NDUFAF3, ABCB10, LAMTOR3, UQCRB, SURF4, SDHB, ABCD3, NDUFB10, NDUFB8, NDUFA2, EIF4A1, CYSTM1, TXNDC5, TMX1, UBC, BAG6, PPBP,</p> <p>Protein Size: 153</p>
Gene ID:	54539
UniProt:	Q9NX14

Application Details

Application Notes:	Optimal working dilution should be determined by the investigator.
Restrictions:	For Research Use only

Handling

Format:	Liquid
Buffer:	Liquid. Purified antibody supplied in 1x PBS buffer with 0.09 % (w/v) sodium azide and 2 % sucrose.
Preservative:	Sodium azide
Precaution of Use:	This product contains Sodium azide: a POISONOUS AND HAZARDOUS SUBSTANCE which should be handled by trained staff only.
Storage:	-20 °C
Storage Comment:	For short term use, store at 2-8°C up to 1 week. For long term storage, store at -20°C in small aliquots to prevent freeze-thaw cycles.



Western Blotting

Image 1. Host: Rabbit Target Name: NDUFB11 Sample Type: Hela Whole Cell lysates Antibody Dilution: 1.0ug/ml

Western Blotting

Image 2. Host: Rabbit Target Name: NDUFB11 Sample Tissue: Human HepG2 Whole Cell Antibody Dilution: 1ug/ml