



[Go to Product page](#)

Datasheet for ABIN5517233

## anti-PARD3 antibody (N-Term)

### 2 Images

#### Overview

|                      |   |
|----------------------|---|
| Quantity:            | 100 µL  |
| Target:              | PARD3   |
| Binding Specificity: | N-Term  |
| Reactivity:          | Human, Mouse, Rat, Guinea Pig, Cow, Rabbit, Zebrafish (Danio rerio) |
| Host:                | Rabbit  |
| Clonality:           | Polyclonal  |
| Conjugate:           | This PARD3 antibody is un-conjugated                                |
| Application:         | Western Blotting (WB), Immunohistochemistry (IHC)                   |

#### Product Details

|                       |  |
|-----------------------|--|
| Immunogen:            | The immunogen is a synthetic peptide directed towards the N-terminal region of Human PARD3     |
| Sequence:             | LEHGDGGILD LDDILCDVAD DKDRLVAVFD EQDPHHGGDG TSASSTGTQS   |
| Predicted Reactivity: | Cow: 100%, Guinea Pig: 100%, Human: 100%, Mouse: 100%, Rabbit: 100%, Rat: 100%, Zebrafish: 86% |
| Characteristics:      | This is a rabbit polyclonal antibody against PARD3. It was validated on Western Blot.          |
| Purification:         | Affinity purified  |

#### Target Details

|                   |  |
|-------------------|--|
| Target:           | PARD3                                    |
| Alternative Name: | PARD3 ( <a href="#">PARD3 Products</a> ) |

## Target Details

---

**Background:** This gene encodes a member of the PARD protein family. PARD family members interact with other PARD family members and other proteins, they affect asymmetrical cell division and direct polarized cell growth. Multiple alternatively spliced transcript variants have been described for this gene.

Alias Symbols: PARD3, PAR3, PAR3A,

Protein Interaction Partner: UBC, AMOTL2, LATS2, YAP1, LATS1, YWHAB, INADL, PRKCI, GAB1, MARK2, PARD6A, YWHAE, AMOT, ARHGAP17, VHL, TJP1, Smurf1, Smurf2, ANP32E, PSME3, RPS18, RPS3, PSME2, PFKP, KPNA4, HSPD1, HSPA8, HSPA6, SIAH1, PARD6B, PARD6G, CCDC88A, RASSF8, PNMA2, DCAF7, PNMA1,

Protein Size: 1000

---

Gene ID: 56288

---

Pathways: [Cell-Cell Junction Organization](#)

## Application Details

---

**Application Notes:** Optimal working dilution should be determined by the investigator.

---

**Restrictions:** For Research Use only

## Handling

---

**Format:** Liquid

---

**Buffer:** Liquid. Purified antibody supplied in 1x PBS buffer with 0.09 % (w/v) sodium azide and 2 % sucrose.

---

**Preservative:** Sodium azide

---

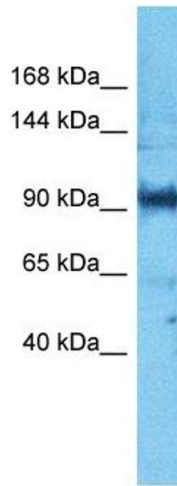
**Precaution of Use:** This product contains Sodium azide: a POISONOUS AND HAZARDOUS SUBSTANCE which should be handled by trained staff only.

---

**Storage:** -20 °C

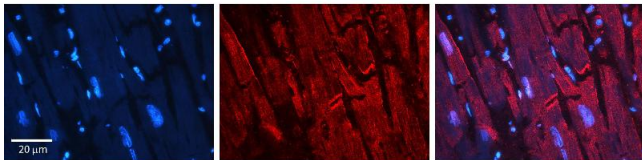
---

**Storage Comment:** For short term use, store at 2-8°C up to 1 week. For long term storage, store at -20°C in small aliquots to prevent freeze-thaw cycles.



### Western Blotting

**Image 1.** Host: Rabbit Target Name: PARD3 Sample Type: PANC1 Whole Cell lysates Antibody Dilution: 1.0ug/ml



### Immunohistochemistry

**Image 2.** Rabbit Anti-PARD3 Antibody Formalin Fixed Paraffin Embedded Tissue: Human heart Tissue Observed Staining: Cytoplasmic, plasma membrane in intercalated disc Primary Antibody Concentration: N/A Other Working Concentrations: 1:600 Secondary Antibody: Donkey anti-Rabbit-Cy3 Secondary Antibody Concentration: 1:200 Magnification: 20X Exposure Time: 0.5 - 2.0 sec