

Datasheet for ABIN5517267
anti-PRPF3 antibody (C-Term)



[Go to Product page](#)

1 Image

Overview

Quantity:	100 µL
Target:	PRPF3
Binding Specificity:	C-Term
Reactivity:	Human, Mouse, Rat, Dog, Cow, Horse, Rabbit, Guinea Pig
Host:	Rabbit
Clonality:	Polyclonal
Conjugate:	This PRPF3 antibody is un-conjugated
Application:	Western Blotting (WB)

Product Details

Immunogen:	The immunogen is a synthetic peptide directed towards the C-terminal region of Human PRPF3
Sequence:	RLMLHRIKWD EQTSNTKGDD DEESDEEAVK KTNKCVLVWE GTAKDRSFGE
Predicted Reactivity:	Cow: 100%, Dog: 100%, Guinea Pig: 100%, Horse: 100%, Human: 100%, Mouse: 100%, Rabbit: 100%, Rat: 100%
Characteristics:	This is a rabbit polyclonal antibody against PRPF3. It was validated on Western Blot.
Purification:	Affinity Purified

Target Details

Target:	PRPF3
Alternative Name:	PRPF3 (PRPF3 Products)

Target Details

Background:	<p>The removal of introns from nuclear pre-mRNAs occurs on complexes called spliceosomes, which are made up of 4 small nuclear ribonucleoprotein (snRNP) particles and an undefined number of transiently associated splicing factors. This gene product is one of several proteins that associate with U4 and U6 snRNPs. Mutations in this gene are associated with retinitis pigmentosa-18.</p> <p>Alias Symbols: PRPF3, HPRP3, PRP3,</p> <p>Protein Interaction Partner: FAM9B, TRIM39, SART3, CEP250, AURKB, UBC, TUBG1, LIN28A, MEPCE, WWOX, WBP4, TARDBP, MMS19, FRA10AC1, SNIP1, NKAP, CTNNBL1, ZCCHC10, U2AF2, SF3B2, SLU7, SMNDC1, RBM39, PRPF3, PCBP1, MFAP1, PATL1, RBM25, NOP58, LSM1, PABPC1, PRPF6, NNT, SRRM2, SUPT16H, SF3A</p> <p>Protein Size: 683</p>
-------------	--

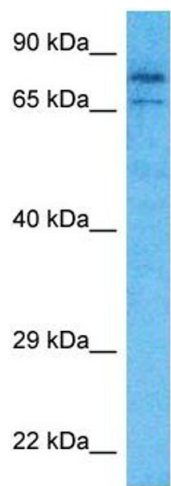
Gene ID:	9129
NCBI Accession:	NP_004689
UniProt:	O43395

Application Details

Application Notes:	Optimal working dilution should be determined by the investigator.
Restrictions:	For Research Use only

Handling

Format:	Liquid
Buffer:	Liquid. Purified antibody supplied in 1x PBS buffer with 0.09 % (w/v) sodium azide and 2 % sucrose.
Preservative:	Sodium azide
Precaution of Use:	This product contains Sodium azide: a POISONOUS AND HAZARDOUS SUBSTANCE which should be handled by trained staff only.
Storage:	-20 °C
Storage Comment:	For short term use, store at 2-8°C up to 1 week. For long term storage, store at -20°C in small aliquots to prevent freeze-thaw cycles.



Western Blotting

Image 1. Host: Rabbit Target Name: PRPF3 Sample Type: MCF7 Whole Cell lysates Antibody Dilution: 1.0ug/ml