

Datasheet for ABIN5517275
anti-PELI2 antibody (N-Term)[Go to Product page](#)

1 Image

Overview

Quantity:	100 µL
Target:	PELI2
Binding Specificity:	N-Term
Reactivity:	Human, Mouse, Rat, Pig, Rabbit, Cow, Zebrafish (Danio rerio), Dog, Guinea Pig, Horse
Host:	Rabbit
Clonality:	Polyclonal
Conjugate:	This PELI2 antibody is un-conjugated
Application:	Western Blotting (WB)

Product Details

Immunogen:	The immunogen is a synthetic peptide directed towards the N-terminal region of Human PELI2
Sequence:	STISRFACRI VCDRNEPYTA RIFAAGFDSS KNIFLGEKAA KWKNPDGHMD
Predicted Reactivity:	Cow: 100%, Dog: 100%, Guinea Pig: 93%, Horse: 93%, Human: 100%, Mouse: 100%, Pig: 100%, Rabbit: 100%, Rat: 100%, Zebrafish: 86%
Characteristics:	This is a rabbit polyclonal antibody against PELI2. It was validated on Western Blot.
Purification:	Affinity purified

Target Details

Target:	PELI2
Alternative Name:	PELI2 (PELI2 Products)

Target Details

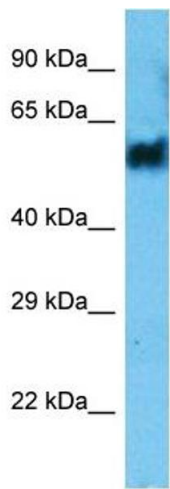
Background:	<p>PELI2 is a E3 ubiquitin ligase catalyzing the covalent attachment of ubiquitin moieties onto substrate proteins. It is involved in the TLR and IL-1 signaling pathways via interaction with the complex containing IRAK kinases and TRAF6. It mediates IL1B-induced IRAK1 'Lys-63'-linked polyubiquitination and possibly 'Lys-48'-linked ubiquitination. It may be important for LPS- and IL1B-induced MAP3K7- dependent, but not MAP3K3-dependent, NF-kappa-B activation. And it can activate the MAP (mitogen activated protein) kinase pathway leading to activation of ELK1.</p> <p>Protein Interaction Partner: SRPK1, FRYL, CREB3L3, THAP7, ERO1L, DEAF1, LAMC3, PICALM, LTBP3, IRAK1, HNRNPK, FN1, UBC, UBQLN4, IRAK4, TRAF6, NR2C2, BCL10, MYD88, IRAK2,</p> <p>Protein Size: 420</p>
Gene ID:	57161
NCBI Accession:	NP_067078
UniProt:	Q9HAT8
Pathways:	Activation of Innate immune Response , Toll-Like Receptors Cascades

Application Details

Application Notes:	Optimal working dilution should be determined by the investigator.
Restrictions:	For Research Use only

Handling

Format:	Liquid
Buffer:	Liquid. Purified antibody supplied in 1x PBS buffer with 0.09 % (w/v) sodium azide and 2 % sucrose.
Preservative:	Sodium azide
Precaution of Use:	This product contains Sodium azide: a POISONOUS AND HAZARDOUS SUBSTANCE which should be handled by trained staff only.
Storage:	-20 °C
Storage Comment:	For short term use, store at 2-8°C up to 1 week. For long term storage, store at -20°C in small aliquots to prevent freeze-thaw cycles.



Western Blotting

Image 1. Host: Rabbit Target Name: PELI2 Sample Type: THP-1 Whole Cell Antibody Dilution: 1.0ug/ml