

Datasheet for ABIN5517408  
**anti-LPPR5 antibody (N-Term)**[Go to Product page](#)

## 1 Image

## Overview

Quantity:	100 µL
Target:	LPPR5
Binding Specificity:	N-Term
Reactivity:	Human, Mouse, Rat, Cow, Horse, Guinea Pig, Rabbit, Pig, Zebrafish (Danio rerio)
Host:	Rabbit
Clonality:	Polyclonal
Conjugate:	This LPPR5 antibody is un-conjugated
Application:	Western Blotting (WB)

## Product Details

Immunogen:	The immunogen is a synthetic peptide directed towards the N-terminal region of Human LPPR5
Sequence:	PLLPAALTSS MLYFQMVIMA GTVMLAYYFE YTDFTVNVQ GFFCHDSAYR
Predicted Reactivity:	Cow: 100%, Guinea Pig: 93%, Horse: 100%, Human: 100%, Mouse: 100%, Pig: 100%, Rabbit: 100%, Rat: 100%, Zebrafish: 86%
Characteristics:	This is a rabbit polyclonal antibody against LPPR5. It was validated on Western Blot.
Purification:	Affinity Purified

## Target Details

Target:	LPPR5
Alternative Name:	LPPR5 ( <a href="#">LPPR5 Products</a> )

## Target Details

**Background:** The protein encoded by this gene is a type 2 member of the phosphatidic acid phosphatase (PAP) family. All type 2 members of this protein family contain 6 transmembrane regions, and a consensus N-glycosylation site. PAPs convert phosphatidic acid to diacylglycerol, and function in de novo synthesis of glycerolipids as well as in receptor-activated signal transduction mediated by phospholipase D. Alternate transcriptional splice variants, encoding different isoforms, have been characterized.

Alias Symbols: LPPR5, PAP2D,

Protein Size: 321

Gene ID: 163404

NCBI Accession: [NP\\_001032394](#)

UniProt: [Q32ZL2](#)

## Application Details

**Application Notes:** Optimal working dilution should be determined by the investigator.

**Restrictions:** For Research Use only

## Handling

**Format:** Liquid

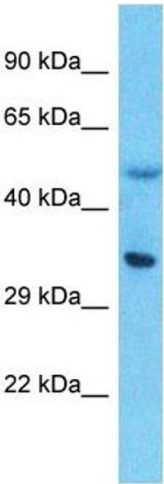
**Buffer:** Liquid. Purified antibody supplied in 1x PBS buffer with 0.09 % (w/v) sodium azide and 2 % sucrose.

**Preservative:** Sodium azide

**Precaution of Use:** This product contains Sodium azide: a POISONOUS AND HAZARDOUS SUBSTANCE which should be handled by trained staff only.

**Storage:** -20 °C

**Storage Comment:** For short term use, store at 2-8°C up to 1 week. For long term storage, store at -20°C in small aliquots to prevent freeze-thaw cycles.



Western Blotting

**Image 1.** Host: Rabbit Target Name: LPPR5 Sample Type: Thymus Tumor lysates Antibody Dilution: 1.0ug/ml