

Datasheet for ABIN5517415  
**anti-SLC25A35 antibody (Middle Region)**[Go to Product page](#)

## 1 Image

## Overview

Quantity:	100 µL
Target:	SLC25A35
Binding Specificity:	Middle Region
Reactivity:	Human, Mouse, Rat, Dog, Horse, Pig, Rabbit, Cow, Guinea Pig, Zebrafish (Danio rerio)
Host:	Rabbit
Clonality:	Polyclonal
Conjugate:	This SLC25A35 antibody is un-conjugated
Application:	Western Blotting (WB)

## Product Details

Immunogen:	The immunogen is a synthetic peptide directed towards the middle region of Human SLC25A35
Sequence:	QAASEIAVGH QYKHQGMFQA LTEIGQKHGL VGLWRGALGG LPRVIVGSST
Predicted Reactivity:	Cow: 86%, Dog: 100%, Guinea Pig: 93%, Horse: 100%, Human: 100%, Mouse: 100%, Pig: 100%, Rabbit: 100%, Rat: 100%, Zebrafish: 91%
Characteristics:	This is a rabbit polyclonal antibody against SLC25A35. It was validated on Western Blot.
Purification:	Affinity Purified

## Target Details

Target:	SLC25A35
Alternative Name:	SLC25A35 ( <a href="#">SLC25A35 Products</a> )

## Target Details

Background: SLC25A35 belongs to the SLC25 family of mitochondrial carrier proteins.

Alias Symbols: SLC25A35,

Protein Size: 300

Gene ID: 399512

NCBI Accession: [XP\\_005256696](#)

UniProt: [Q3KQZ1](#)

## Application Details

Application Notes: Optimal working dilution should be determined by the investigator.

Restrictions: For Research Use only

## Handling

Format: Liquid

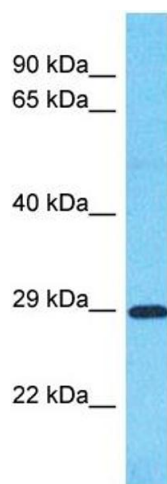
Buffer: Liquid. Purified antibody supplied in 1x PBS buffer with 0.09 % (w/v) sodium azide and 2 % sucrose.

Preservative: Sodium azide

Precaution of Use: This product contains Sodium azide: a POISONOUS AND HAZARDOUS SUBSTANCE which should be handled by trained staff only.

Storage: -20 °C

Storage Comment: For short term use, store at 2-8°C up to 1 week. For long term storage, store at -20°C in small aliquots to prevent freeze-thaw cycles.



Western Blotting

**Image 1.** Host: Rabbit Target Name: SLC25A35 Sample Type: Stomach Tumor lysates Antibody Dilution: 1.0ug/ml