



[Go to Product page](#)

Datasheet for ABIN5517548
anti-SLC22A15 antibody (N-Term)

1 Image

Overview

Quantity:	100 µL
Target:	SLC22A15
Binding Specificity:	N-Term
Reactivity:	Human, Cow, Dog, Rabbit, Rat, Horse
Host:	Rabbit
Clonality:	Polyclonal
Conjugate:	This SLC22A15 antibody is un-conjugated
Application:	Western Blotting (WB)

Product Details

Immunogen:	The immunogen is a synthetic peptide directed towards the N-terminal region of Human SLC22A15
Sequence:	WDLAELLPNQ SHGNQSAGED QAFGDWLLTA NGSEIHKHVH FSSSFTSIAS
Predicted Reactivity:	Cow: 93%, Dog: 77%, Horse: 79%, Human: 100%, Rabbit: 93%, Rat: 85%
Characteristics:	This is a rabbit polyclonal antibody against SLC22A15. It was validated on Western Blot.
Purification:	Affinity Purified

Target Details

Target:	SLC22A15
Alternative Name:	SLC22A15 (SLC22A15 Products)

Target Details

Background: Organic ion transporters, such as SLC22A15, transport various medically and physiologically important compounds, including pharmaceuticals, toxins, hormones, neurotransmitters, and cellular metabolites. These transporters are also referred to as amphiphilic solute facilitators (ASFs).

Alias Symbols: SLC22A15, FLIPT1, UNQ9429/PRO34686,

Protein Size: 245

Gene ID: 55356

NCBI Accession: [XP_005271063](#)

Application Details

Application Notes: Optimal working dilution should be determined by the investigator.

Restrictions: For Research Use only

Handling

Format: Liquid

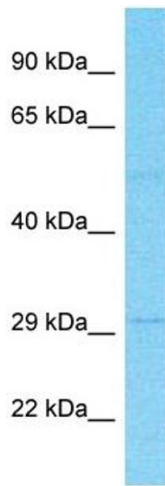
Buffer: Liquid. Purified antibody supplied in 1x PBS buffer with 0.09 % (w/v) sodium azide and 2 % sucrose.

Preservative: Sodium azide

Precaution of Use: This product contains Sodium azide: a POISONOUS AND HAZARDOUS SUBSTANCE which should be handled by trained staff only.

Storage: -20 °C

Storage Comment: For short term use, store at 2-8°C up to 1 week. For long term storage, store at -20°C in small aliquots to prevent freeze-thaw cycles.



Western Blotting

Image 1. Host: Rabbit Target Name: SLC22A15 Sample Type: Stomach Tumor lysates Antibody Dilution: 1.0ug/ml