



[Go to Product page](#)

Datasheet for ABIN5517620
anti-OLFML3 antibody (N-Term)

1 Image

Overview

Quantity:	100 µL
Target:	OLFML3
Binding Specificity:	N-Term
Reactivity:	Human, Mouse, Rat, Pig, Rabbit, Cow, Dog, Horse, Guinea Pig
Host:	Rabbit
Clonality:	Polyclonal
Conjugate:	This OLFML3 antibody is un-conjugated
Application:	Western Blotting (WB)

Product Details

Immunogen:	The immunogen is a synthetic peptide directed towards the N-terminal region of Human OLFML3
Sequence:	WSGPLQGQQH HLVEYMERRL AALEERLAQC QDQSSRHAAE LRDFKNKMLP
Predicted Reactivity:	Cow: 100%, Dog: 100%, Guinea Pig: 93%, Horse: 100%, Human: 100%, Mouse: 93%, Pig: 100%, Rabbit: 100%, Rat: 100%
Characteristics:	This is a rabbit polyclonal antibody against OLFML3. It was validated on Western Blot.
Purification:	Affinity Purified

Target Details

Target:	OLFML3
---------	--------

Target Details

Alternative Name: [OLFML3 \(OLFML3 Products\)](#)

Background: OLFML3 is a secreted scaffold protein that plays an essential role in dorsoventral patterning during early development. It stabilizes axial formation by restricting chordin (CHRD) activity on the dorsal side. Acts by facilitating the association between the tolloid proteases and their substrate chordin (CHRD), leading to enhance chordin (CHRD) degradation. It may have matrix-related function involved in placental and embryonic development, or play a similar role in other physiological processes.

Alias Symbols: OLFML3, PSEC0035, PSEC0173, PSEC0244, UNQ663/PRO1294,

Protein Interaction Partner: Dlg4, MYOC, FEZ1, HSPB3, SETDB1, CKMT2,

Protein Size: 406

Gene ID: 56944

NCBI Accession: [NP_064575](#)

UniProt: [Q9NRN5](#)

Application Details

Application Notes: Optimal working dilution should be determined by the investigator.

Restrictions: For Research Use only

Handling

Format: Liquid

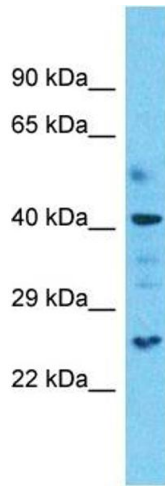
Buffer: Liquid. Purified antibody supplied in 1x PBS buffer with 0.09 % (w/v) sodium azide and 2 % sucrose.

Preservative: Sodium azide

Precaution of Use: This product contains Sodium azide: a POISONOUS AND HAZARDOUS SUBSTANCE which should be handled by trained staff only.

Storage: -20 °C

Storage Comment: For short term use, store at 2-8°C up to 1 week. For long term storage, store at -20°C in small aliquots to prevent freeze-thaw cycles.



Western Blotting

Image 1. Host: Rabbit Target Name: OLFML3 Sample Type: Uterus Tumor lysates Antibody Dilution: 1.0ug/ml