

Datasheet for ABIN5517660  
**anti-WDR7 antibody (C-Term)**[Go to Product page](#)

## 1 Image

## Overview

Quantity:	100 µL
Target:	WDR7
Binding Specificity:	C-Term
Reactivity:	Human, Rat, Cow, Dog, Guinea Pig, Horse, Mouse, Rabbit, Zebrafish (Danio rerio)
Host:	Rabbit
Clonality:	Polyclonal
Conjugate:	This WDR7 antibody is un-conjugated
Application:	Western Blotting (WB)

## Product Details

Immunogen:	The immunogen is a synthetic peptide directed towards the C-terminal region of Human WDR7
Sequence:	LYDIRTGKQCQ TIHGHHKGPIT AVAFAPDGRY LATYSNTDSH ISFWQMNTSL
Predicted Reactivity:	Cow: 100%, Dog: 100%, Guinea Pig: 100%, Horse: 100%, Human: 100%, Mouse: 100%, Rabbit: 100%, Rat: 100%, Zebrafish: 93%
Characteristics:	This is a rabbit polyclonal antibody against WDR7. It was validated on Western Blot.
Purification:	Affinity purified

## Target Details

Target:	WDR7
Alternative Name:	WDR7 ( <a href="#">WDR7 Products</a> )

## Target Details

Background:	<p>This gene encodes a member of the WD repeat protein family. WD repeats are minimally conserved regions of approximately 40 amino acids typically bracketed by gly-his and trp-aspartate (GH-WD) that may facilitate formation of heterotrimeric or multiprotein complexes. Members of this family are involved in a variety of cellular processes, including cell cycle progression, signal transduction, apoptosis, and gene regulation. The encoded protein forms the beta subunit of rabconnectin-3 and binds directly with Rab3A GDP/GTP exchange protein and indirectly with Rab3A GDP/GTP activating protein, these proteins are regulators of Rab3 small G protein family members involved in control of the calcium-dependant exocytosis of neurotransmitters. Alternatively spliced transcript variants encoding different isoforms have been described.</p> <p>Alias Symbols: WDR7, KIAA0541, TRAG,</p> <p>Protein Interaction Partner: FRMD6, RAB3GAP1, DMXL2,</p> <p>Protein Size: 1490</p>
-------------	--

Gene ID:	23335
NCBI Accession:	<a href="#">XP_006722494</a>
UniProt:	<a href="#">Q9Y4E6</a>

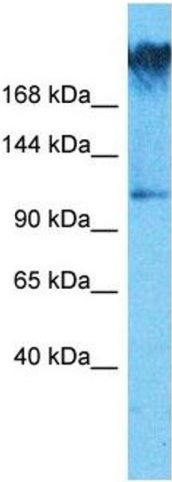
## Application Details

Application Notes:	Optimal working dilution should be determined by the investigator.
Restrictions:	For Research Use only

## Handling

Format:	Liquid
Buffer:	Liquid. Purified antibody supplied in 1x PBS buffer with 0.09 % (w/v) sodium azide and 2 % sucrose.
Preservative:	Sodium azide
Precaution of Use:	This product contains Sodium azide: a POISONOUS AND HAZARDOUS SUBSTANCE which should be handled by trained staff only.
Storage:	-20 °C
Storage Comment:	For short term use, store at 2-8°C up to 1 week. For long term storage, store at -20°C in small

aliquots to prevent freeze-thaw cycles.



**Western Blotting**

**Image 1.** Host: Rabbit Target Name: WDR7 Sample Type: COLO205 Whole Cell lysates Antibody Dilution: 1.0ug/ml