

Datasheet for ABIN5517729
anti-ZFY antibody (C-Term)[Go to Product page](#)

1 Image

Overview

Quantity:	100 µL
Target:	ZFY
Binding Specificity:	C-Term
Reactivity:	Human, Cow, Rabbit, Rat, Dog, Guinea Pig, Horse, Mouse, Zebrafish (Danio rerio)
Host:	Rabbit
Clonality:	Polyclonal
Conjugate:	This ZFY antibody is un-conjugated
Application:	Western Blotting (WB)

Product Details

Immunogen:	The immunogen is a synthetic peptide directed towards the C-terminal region of Human ZFY
Sequence:	RPSELKKHVA VHKGKKMHQC RHCDFKIADP FVLSRHILSV HTKDLPFRCK
Predicted Reactivity:	Cow: 100%, Dog: 100%, Guinea Pig: 100%, Horse: 100%, Human: 100%, Mouse: 100%, Rabbit: 100%, Rat: 100%, Zebrafish: 100%
Characteristics:	This is a rabbit polyclonal antibody against ZFY. It was validated on Western Blot.
Purification:	Affinity purified

Target Details

Target:	ZFY
Alternative Name:	ZFY (ZFY Products)

Target Details

Background: This gene encodes a zinc finger-containing protein that may function as a transcription factor. This gene was once a candidate gene for the testis-determining factor (TDF) and was erroneously referred to as TDF.

Alias Symbols: ZFY,

Protein Interaction Partner: RNF2, UBC, ZBTB9,

Protein Size: 801

Gene ID: 7544

NCBI Accession: [XP_006724936](#)

UniProt: [P08048](#)

Application Details

Application Notes: Optimal working dilution should be determined by the investigator.

Restrictions: For Research Use only

Handling

Format: Liquid

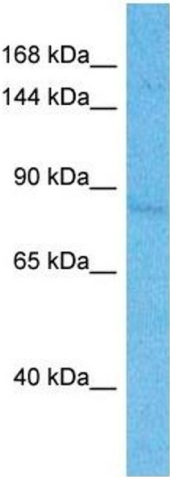
Buffer: Liquid. Purified antibody supplied in 1x PBS buffer with 0.09 % (w/v) sodium azide and 2 % sucrose.

Preservative: Sodium azide

Precaution of Use: This product contains Sodium azide: a POISONOUS AND HAZARDOUS SUBSTANCE which should be handled by trained staff only.

Storage: -20 °C

Storage Comment: For short term use, store at 2-8°C up to 1 week. For long term storage, store at -20°C in small aliquots to prevent freeze-thaw cycles.



Western Blotting

Image 1. Host: Rabbit Target Name: ZFY Sample Type: ACHN Whole Cell lysates Antibody Dilution: 1.0ug/ml