

Datasheet for ABIN5517808  
**anti-METTL22 antibody (C-Term)**[Go to Product page](#)

## 1 Image

## Overview

Quantity:	100 µL
Target:	METTL22
Binding Specificity:	C-Term
Reactivity:	Human, Mouse, Cow, Dog, Guinea Pig, Horse, Rabbit, Rat
Host:	Rabbit
Clonality:	Polyclonal
Conjugate:	This METTL22 antibody is un-conjugated
Application:	Western Blotting (WB)

## Product Details

Immunogen:	The immunogen is a synthetic peptide directed towards the C-terminal region of Human METTL22
Sequence:	FTLRHLDVTC EAYDHFRSCL HALEQLADGK LRFVVEPVEA SFPQLLVYER
Predicted Reactivity:	Cow: 93%, Dog: 93%, Guinea Pig: 93%, Horse: 79%, Human: 100%, Mouse: 100%, Rabbit: 93%, Rat: 93%
Characteristics:	This is a rabbit polyclonal antibody against METTL22. It was validated on Western Blot.
Purification:	Affinity Purified

## Target Details

Target:	METTL22
---------	---------

## Target Details

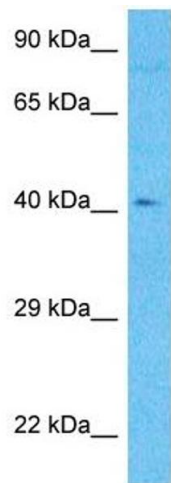
Alternative Name:	METTL22 ( <a href="#">METTL22 Products</a> )
Background:	<p>METTL22 is a protein N-lysine methyltransferase, in vitro it methylates KIN.</p> <p>Alias Symbols: METTL22, C16orf68, LP8272,</p> <p>Protein Interaction Partner: FOXK1, METTL22, EXOSC1, EXOSC2, KIN, EXOSC8, TUBB4A, TUBB3, LRPPRC, GTF3C4, SF1, TUBB2A, HSP90AB1, HSP90AA1, HSPA8, HSPA5, HSPA1L, HSP90AB2P, TUBB2B,</p> <p>Protein Size: 404</p>
Gene ID:	79091
UniProt:	<a href="#">Q9BUU2</a>

## Application Details

Application Notes:	Optimal working dilution should be determined by the investigator.
Restrictions:	For Research Use only

## Handling

Format:	Liquid
Buffer:	Liquid. Purified antibody supplied in 1x PBS buffer with 0.09 % (w/v) sodium azide and 2 % sucrose.
Preservative:	Sodium azide
Precaution of Use:	This product contains Sodium azide: a POISONOUS AND HAZARDOUS SUBSTANCE which should be handled by trained staff only.
Storage:	-20 °C
Storage Comment:	For short term use, store at 2-8°C up to 1 week. For long term storage, store at -20°C in small aliquots to prevent freeze-thaw cycles.



Western Blotting

**Image 1.** Host: Rabbit Target Name: METTL22 Sample Type: 721\_B Whole Cell lysates Antibody Dilution: 1.0ug/ml