

Datasheet for ABIN5517851
anti-SLC25A30 antibody (N-Term)[Go to Product page](#)

1 Image

Overview

Quantity:	100 µL
Target:	SLC25A30
Binding Specificity:	N-Term
Reactivity:	Human, Cow, Dog, Guinea Pig, Horse, Mouse, Pig, Rabbit, Rat
Host:	Rabbit
Clonality:	Polyclonal
Conjugate:	This SLC25A30 antibody is un-conjugated
Application:	Western Blotting (WB)

Product Details

Immunogen:	The immunogen is a synthetic peptide directed towards the N-terminal region of Human SLC25A30
Sequence:	GTFPIDLTKT RLQIQGQTND AKFKEIRYRG MLHALVRIGR EEGLKALYS
Predicted Reactivity:	Cow: 86%, Dog: 93%, Guinea Pig: 79%, Horse: 93%, Human: 100%, Mouse: 86%, Pig: 86%, Rabbit: 86%, Rat: 93%
Characteristics:	This is a rabbit polyclonal antibody against SLC25A30. It was validated on Western Blot.
Purification:	Affinity Purified

Target Details

Target:	SLC25A30
---------	----------

Target Details

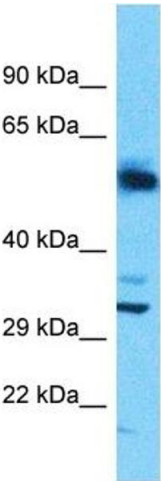
Alternative Name:	SLC25A30 (SLC25A30 Products)
Background:	<p>Although the outer mitochondrial membrane is permeable to many small metabolites, transport of solutes across the inner mitochondrial membrane is achieved by members of the mitochondrial carrier protein family, such as SLC25A30.</p> <p>Alias Symbols: SLC25A30, KMCP1,</p> <p>Protein Interaction Partner: UBC,</p> <p>Protein Size: 291</p>
Gene ID:	253512
NCBI Accession:	NP_001010875
UniProt:	Q5SVS4

Application Details

Application Notes:	Optimal working dilution should be determined by the investigator.
Restrictions:	For Research Use only

Handling

Format:	Liquid
Buffer:	Liquid. Purified antibody supplied in 1x PBS buffer with 0.09 % (w/v) sodium azide and 2 % sucrose.
Preservative:	Sodium azide
Precaution of Use:	This product contains Sodium azide: a POISONOUS AND HAZARDOUS SUBSTANCE which should be handled by trained staff only.
Storage:	-20 °C
Storage Comment:	For short term use, store at 2-8°C up to 1 week. For long term storage, store at -20°C in small aliquots to prevent freeze-thaw cycles.



Western Blotting

Image 1. Host: Rabbit Target Name: SLC25A30 Sample Type: Uterus Tumor lysates Antibody Dilution: 1.0ug/ml