



[Go to Product page](#)

Datasheet for ABIN5517887

## anti-Cytochrome b antibody (C-Term)

### 2 Images

#### Overview

Quantity:	100 µL
Target:	Cytochrome b (MT-CYB)
Binding Specificity:	C-Term
Reactivity:	Human
Host:	Rabbit
Clonality:	Polyclonal
Conjugate:	This Cytochrome b antibody is un-conjugated
Application:	Western Blotting (WB)

#### Product Details

Immunogen:	The immunogen is a synthetic peptide directed towards the C-terminal region of human MT-CYB
Sequence:	LFSPDLLGDP DNYTLANPLN TPPHIKPEWY FLFAYTILRS VPKNLGGVLA
Predicted Reactivity:	Human: 100%
Characteristics:	This is a rabbit polyclonal antibody against cytb. It was validated on Western Blot.
Purification:	Affinity Purified

#### Target Details

Target:	Cytochrome b (MT-CYB)
Alternative Name:	MT-CYB ( <a href="#">MT-CYB Products</a> )

## Target Details

---

Background: Alias Symbols: MTCYB, CYTB

Protein Size: 380

Gene ID: 4519

NCBI Accession: [NC\\_012920, YP\\_003024038](#)

UniProt: [P00156](#)

Pathways: [Proton Transport](#)

## Application Details

---

Application Notes: Optimal working dilution should be determined by the investigator.

Restrictions: For Research Use only

## Handling

---

Format: Liquid

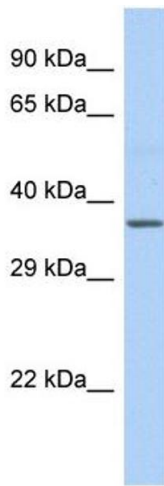
Buffer: Liquid. Purified antibody supplied in 1x PBS buffer with 0.09 % (w/v) sodium azide and 2 % sucrose.

Preservative: Sodium azide

Precaution of Use: This product contains Sodium azide: a POISONOUS AND HAZARDOUS SUBSTANCE which should be handled by trained staff only.

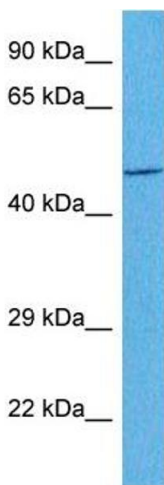
Storage: -20 °C

Storage Comment: For short term use, store at 2-8°C up to 1 week. For long term storage, store at -20°C in small aliquots to prevent freeze-thaw cycles.



#### Western Blotting

**Image 1.** Host: Rabbit Target Name: cytb Sample Type: Fetal Liver lysates Antibody Dilution: 1.0ug/ml



#### Western Blotting

**Image 2.** Host: Rabbit Target Name: CYTB Sample Tissue: Human OVCA8-3 Whole Cell Antibody Dilution: 1ug/ml