

Datasheet for ABIN5517981  
**anti-SLC38A10 antibody (C-Term)**[Go to Product page](#)

## 1 Image

## Overview

Quantity:	100 µL
Target:	SLC38A10
Binding Specificity:	C-Term
Reactivity:	Human, Guinea Pig, Mouse, Rat, Saccharomyces cerevisiae
Host:	Rabbit
Clonality:	Polyclonal
Conjugate:	This SLC38A10 antibody is un-conjugated
Application:	Western Blotting (WB)

## Product Details

Immunogen:	The immunogen is a synthetic peptide directed towards the C-terminal region of Human SLC38A10
Sequence:	HKEIHQQRQE DEEDKPRQVE VHQPGEAAVP RGQEAPEGKA RETVENLPPL
Predicted Reactivity:	Guinea Pig: 93%, Human: 100%, Mouse: 91%, Rat: 93%, Yeast: 77%
Characteristics:	This is a rabbit polyclonal antibody against SLC38A10. It was validated on Western Blot.
Purification:	Affinity Purified

## Target Details

Target:	SLC38A10
Alternative Name:	SLC38A10 ( <a href="#">SLC38A10 Products</a> )

## Target Details

Background: SLC38A10 is a putative sodium-dependent amino acid/proton antiporter.

Alias Symbols: SLC38A10, PP1744,

Protein Interaction Partner: UBC,

Protein Size: 686

Gene ID: 124565

## Application Details

Application Notes: Optimal working dilution should be determined by the investigator.

Restrictions: For Research Use only

## Handling

Format: Liquid

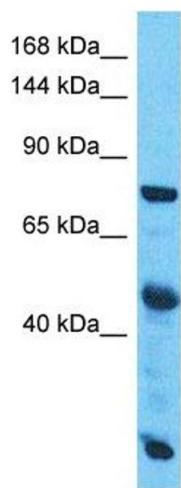
Buffer: Liquid. Purified antibody supplied in 1x PBS buffer with 0.09 % (w/v) sodium azide and 2 % sucrose.

Preservative: Sodium azide

Precaution of Use: This product contains Sodium azide: a POISONOUS AND HAZARDOUS SUBSTANCE which should be handled by trained staff only.

Storage: -20 °C

Storage Comment: For short term use, store at 2-8°C up to 1 week. For long term storage, store at -20°C in small aliquots to prevent freeze-thaw cycles.



Western Blotting

**Image 1.** Host: Rabbit Target Name: SLC38A10 Sample Type: Esophagus Tumor lysates Antibody Dilution: 1.0ug/ml