

Datasheet for ABIN5517988
anti-GSAP antibody (N-Term)[Go to Product page](#)

1 Image

Overview

Quantity:	100 µL
Target:	GSAP (PION)
Binding Specificity:	N-Term
Reactivity:	Human, Rat, Horse, Rabbit, Cow, Dog
Host:	Rabbit
Clonality:	Polyclonal
Conjugate:	This GSAP antibody is un-conjugated
Application:	Western Blotting (WB)

Product Details

Immunogen:	The immunogen is a synthetic peptide directed towards the N-terminal region of Human GSAP
Sequence:	QTRQNELLYT FEKDLQVFSC SVNSERTLLA ASLVQSTKEG KRNELQPGSK
Predicted Reactivity:	Cow: 85%, Dog: 85%, Horse: 93%, Human: 100%, Rabbit: 93%, Rat: 86%
Characteristics:	This is a rabbit polyclonal antibody against GSAP. It was validated on Western Blot.
Purification:	Affinity purified

Target Details

Target:	GSAP (PION)
Alternative Name:	GSAP (PION Products)
Background:	Accumulation of neurotoxic amyloid-beta is a major hallmark of Alzheimer disease. Formation

Target Details

of amyloid-beta is catalyzed by gamma-secretase, a protease with numerous substrates. PION, or GSAP, selectively increases amyloid-beta production through a mechanism involving its interaction with both gamma-secretase and its substrate, the amyloid-beta precursor protein C-terminal fragment (APP-CTF).

Alias Symbols: GSAP, PION,

Protein Size: 854

Gene ID: 54103

NCBI Accession: [NP_059135](#)

UniProt: [A4D1B5](#)

Application Details

Application Notes: Optimal working dilution should be determined by the investigator.

Restrictions: For Research Use only

Handling

Format: Liquid

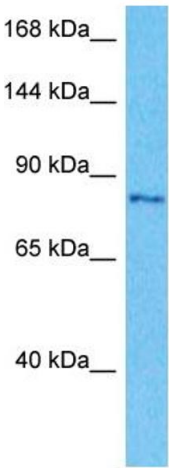
Buffer: Liquid. Purified antibody supplied in 1x PBS buffer with 0.09 % (w/v) sodium azide and 2 % sucrose.

Preservative: Sodium azide

Precaution of Use: This product contains Sodium azide: a POISONOUS AND HAZARDOUS SUBSTANCE which should be handled by trained staff only.

Storage: -20 °C

Storage Comment: For short term use, store at 2-8°C up to 1 week. For long term storage, store at -20°C in small aliquots to prevent freeze-thaw cycles.



Host: Rabbit
Target Name: GSAP
Sample Tissue: 721_B Cell Lysate
Antibody Dilution: 1.0µg/ml

Western Blotting

Image 1. Host: Rabbit Target Name: GSAP Sample Type: 721_B Whole Cell lysates Antibody Dilution: 1.0ug/ml