

Datasheet for ABIN5518082  
**anti-TMEM220 antibody (Middle Region)**[Go to Product page](#)

## 1 Image

## Overview

Quantity:	100 µL
Target:	TMEM220
Binding Specificity:	Middle Region
Reactivity:	Dog, Human, Rabbit, Cow, Guinea Pig, Horse, Mouse, Rat
Host:	Rabbit
Clonality:	Polyclonal
Application:	Western Blotting (WB)

## Product Details

Immunogen:	The immunogen is a synthetic peptide directed towards the middle region of Human TMEM220
Sequence:	LASYLLHRTQ QNILHEEEGR ELSGLVIITA WIILCHSSSK NPVGGRQLA
Predicted Reactivity:	Cow: 91%, Dog: 100%, Guinea Pig: 86%, Horse: 92%, Human: 100%, Mouse: 82%, Rabbit: 100%, Rat: 83%
Characteristics:	This is a rabbit polyclonal antibody against TMEM220. It was validated on Western Blot.
Purification:	Affinity Purified

## Target Details

Target:	TMEM220
Alternative Name:	TMEM220 ( <a href="#">TMEM220 Products</a> )
Background:	The function of this protein remains unknown.

## Target Details

---

Alias Symbols: TMEM220,

Protein Size: 160

Gene ID: 388335

UniProt: [Q6QAJ8](#)

## Application Details

---

Application Notes: Optimal working dilution should be determined by the investigator.

Restrictions: For Research Use only

## Handling

---

Format: Liquid

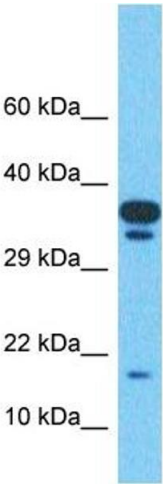
Buffer: Liquid. Purified antibody supplied in 1x PBS buffer with 0.09 % (w/v) sodium azide and 2 % sucrose.

Preservative: Sodium azide

Precaution of Use: This product contains Sodium azide: a POISONOUS AND HAZARDOUS SUBSTANCE which should be handled by trained staff only.

Storage: -20 °C

Storage Comment: For short term use, store at 2-8°C up to 1 week. For long term storage, store at -20°C in small aliquots to prevent freeze-thaw cycles.



Western Blotting

**Image 1.** Host: Rabbit Target Name: TMEM220 Sample Type: Uterus Tumor lysates Antibody Dilution: 1.0ug/ml