

Datasheet for ABIN5518086  
**anti-GPAT2 antibody (N-Term)**



[Go to Product page](#)

1 Image

## Overview

Quantity:	100 µL
Target:	GPAT2
Binding Specificity:	N-Term
Reactivity:	Human
Host:	Rabbit
Clonality:	Polyclonal
Conjugate:	This GPAT2 antibody is un-conjugated
Application:	Western Blotting (WB)

## Product Details

Immunogen:	The immunogen is a synthetic peptide directed towards the N-terminal region of Human GPAT2
Sequence:	MATMLEGRCQ TQPRSSPSGR EASLWSSGFG MKLEAVTPFL GKYPFVGRC
Predicted Reactivity:	Human: 100%
Characteristics:	This is a rabbit polyclonal antibody against GPAT2. It was validated on Western Blot.
Purification:	Affinity Purified

## Target Details

Target:	GPAT2
Alternative Name:	GPAT2 ( <a href="#">GPAT2 Products</a> )
Background:	GPAT2 esterifies acyl-group from acyl-ACP to the sn-1 position of glycerol-3-phosphate, an

Target Details

essential step in glycerolipid biosynthesis.

Alias Symbols: GPAT2,

Protein Interaction Partner: UBC,

Protein Size: 671

Gene ID: 150763

NCBI Accession: [XP\\_006712378](#)

Application Details

Application Notes: Optimal working dilution should be determined by the investigator.

Restrictions: For Research Use only

Handling

Format: Liquid

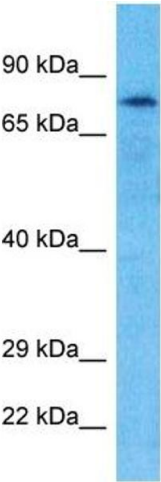
Buffer: Liquid. Purified antibody supplied in 1x PBS buffer with 0.09 % (w/v) sodium azide and 2 % sucrose.

Preservative: Sodium azide

Precaution of Use: This product contains Sodium azide: a POISONOUS AND HAZARDOUS SUBSTANCE which should be handled by trained staff only.

Storage: -20 °C

Storage Comment: For short term use, store at 2-8°C up to 1 week. For long term storage, store at -20°C in small aliquots to prevent freeze-thaw cycles.



Western Blotting

**Image 1.** Host: Rabbit Target Name: GPAT2 Sample Type: Hela Whole Cell lysates Antibody Dilution: 1.0ug/ml