



[Go to Product page](#)

Datasheet for ABIN5518670

anti-Caspase 6 antibody (N-Term)

5 Images

Overview

Quantity:	100 µg
Target:	Caspase 6 (CASP6)
Binding Specificity:	AA 7-27, N-Term
Reactivity:	Mouse, Rat
Host:	Rabbit
Clonality:	Polyclonal
Conjugate:	This Caspase 6 antibody is un-conjugated
Application:	Western Blotting (WB), Immunohistochemistry (Paraffin-embedded Sections) (IHC (p)), Immunohistochemistry (Frozen Sections) (IHC (fro))

Product Details

Purpose:	Rabbit IgG polyclonal antibody for Caspase-6(CASP6) detection. Tested with WB, IHC-P, IHC-F in Mouse, Rat.
Immunogen:	A synthetic peptide corresponding to a sequence at the N-terminus of rat Caspase-6(P18)(7-27aa FYRSREVLDPAEQYKMDHKRR), different from the related mouse sequence by two amino acids.
Sequence:	FYRSREVLDP AEQYKMDHKR R
Isotype:	IgG
Cross-Reactivity (Details):	No cross reactivity with other proteins.
Characteristics:	Rabbit IgG polyclonal antibody for Caspase-6(CASP6) detection. Tested with WB, IHC-P, IHC-F in Mouse, Rat.

Product Details

Gene Name: caspase 6, apoptosis-related cysteine peptidase

Protein Name: Caspase-6

Purification: Immunogen affinity purified.

Target Details

Target: Caspase 6 (CASP6)

Alternative Name: CASP6 ([CASP6 Products](#))

Background: Caspase 6 is an enzyme that in humans is encoded by the caspase 6 gene. This gene encodes a protein that is a member of the cysteine-aspartic acid protease(caspase) family. Using radiation hybrid mapping, the Caspase 6 gene is localized to human chromosome 4q25-q26. Caspase 6 functions as a downstream enzyme in the caspase activation cascade. And Caspase 6 can cleave lamin A to its signature apoptotic fragment.

Synonyms: Apoptosis Related Cysteine Protease antibody|Apoptotic cysteine protease MCH2 antibody|Apoptotic protease MCH 2 antibody|Apoptotic protease Mch-2 antibody|Apoptotic protease MCH2 antibody|Casp 6 antibody|CASP-6 antibody|Casp6 antibody|Caspase 6 antibody|Caspase 6 apoptosis related cysteine protease antibody|Caspase 6 precursor antibody|Caspase 6, apoptosis related cysteine peptidase antibody|Caspase-6 subunit p18 antibody|Caspase6 antibody|Human cysteine protease Mch2 isoform alpha antibody|Mch 2 antibody|Mch2 antibody|OTTHUMP00000162742 antibody|OTTHUMP00000162743 antibody

UniProt: [O35397](#)

Pathways: [Apoptosis, Caspase Cascade in Apoptosis](#)

Application Details

Application Notes: WB: Concentration: 0.1-0.5 µg/mL, Tested Species: Mouse, Rat
IHC-P: Concentration: 0.5-1 µg/mL, Tested Species: Mouse, Rat, Epitope Retrieval by Heat: Boiling the paraffin sections in 10 mM citrate buffer, pH 6.0, for 20 mins is required for the staining of formalin/paraffin sections.
IHC-F: Concentration: 0.5-1 µg/mL, Tested Species: Rat, Predicted Species: Mouse
Notes: Tested Species: Species with positive results. Predicted Species: Species predicted to be fit for the product based on sequence similarities. Other applications have not been tested.
Optimal dilutions should be determined by end users.

Comment: Antibody can be supported by chemiluminescence kit ABIN921124 in WB, supported by

Application Details

ABIN921231 in IHC(P) and IHC(F).

Restrictions: For Research Use only

Handling

Format: Lyophilized

Reconstitution: Add 0.2 mL of distilled water will yield a concentration of 500 µg/mL.

Concentration: 500 µg/mL

Buffer: Each vial contains 5 mg BSA, 0.9 mg NaCl, 0.2 mg Na₂HPO₄, 0.05 mg Thimerosal, 0.05 mg Sodium azide.

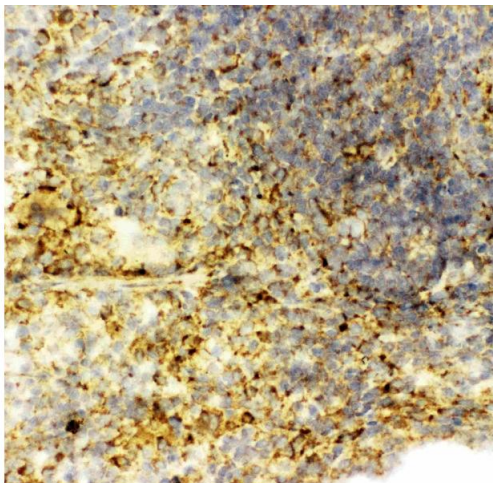
Preservative: Sodium azide, Thimerosal (Merthiolate)

Precaution of Use: This product contains Sodium azide and Thimerosal (Merthiolate): POISONOUS AND HAZARDOUS SUBSTANCES which should be handled by trained staff only.

Storage: 4 °C, -20 °C

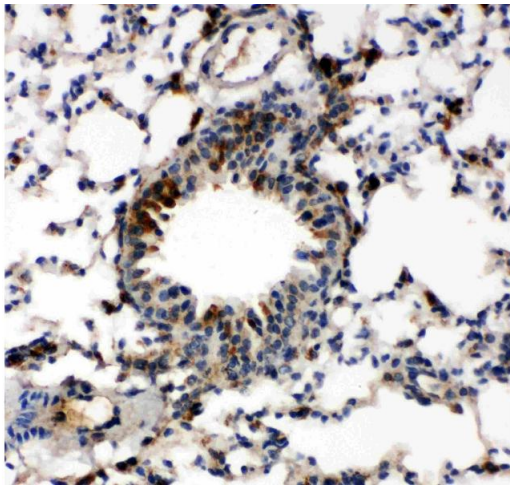
Storage Comment: At -20°C for one year. After reconstitution, at 4°C for one month.
It can also be aliquotted and stored frozen at -20 °C for a longer time. Avoid repeated freezing and thawing.

Images



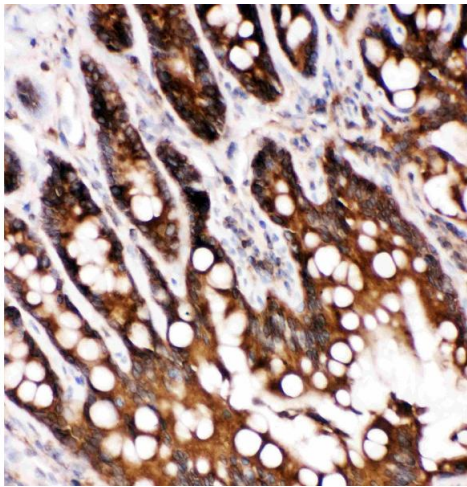
Immunohistochemistry

Image 1. Anti-Caspase-6(P18) antibody, IHC(F): Rat Spleen Tissue



Immunohistochemistry

Image 2. Anti-Caspase-6(P18) antibody, IHC(P): Mouse Lung Tissue



Immunohistochemistry

Image 3. Anti-Caspase-6(P18) antibody, IHC(P): Rat Intestine Tissue

Please check the [product details page](#) for more images. Overall 5 images are available for ABIN5518670.