

Datasheet for ABIN5518677
anti-GRB7 antibody (Middle Region)**2** Images**1** Publication[Go to Product page](#)

Overview

Quantity:	100 µg
Target:	GRB7
Binding Specificity:	AA 124-141, Middle Region
Reactivity:	Human, Rat
Host:	Rabbit
Clonality:	Polyclonal
Conjugate:	This GRB7 antibody is un-conjugated
Application:	Western Blotting (WB), Immunohistochemistry (Paraffin-embedded Sections) (IHC (p))

Product Details

Purpose:	Rabbit IgG polyclonal antibody for Growth factor receptor-bound protein 7(GRB7) detection. Tested with WB, IHC-P in Human,Mouse,Rat.
Immunogen:	A synthetic peptide corresponding to a sequence in the middle region of human GRB7(124-141aa ARHVCSEMLVQRAHALSDE), identical to the related rat and mouse sequences.
Sequence:	ARHVCSEMLVQ RAHALSDE
Isotype:	IgG
Cross-Reactivity (Details):	Predicted Cross Reactivity: mouse No cross reactivity with other proteins. Predicted Cross Reactivity: Species predicted to be fit for the product based on sequence similarities.
Characteristics:	Rabbit IgG polyclonal antibody for Growth factor receptor-bound protein 7(GRB7) detection.

Product Details

Tested with WB, IHC-P in Human, Mouse, Rat.

Gene Name: growth factor receptor-bound protein 7

Protein Name: Growth factor receptor-bound protein 7

Purification: Immunogen affinity purified.

Target Details

Target: GRB7

Alternative Name: GRB7 ([GRB7 Products](#))

Background: GRB7, growth factor receptor-bound protein 7, is a protein which in humans is encoded by the GRB7 gene. The product of this gene belongs to a small family of adaptor proteins that are known to interact with a number of receptor tyrosine kinases and signaling molecules. This gene encodes a growth factor receptor-binding protein that interacts with epidermal growth factor receptor (EGFR) and ephrin receptors. The protein plays a role in the integrin signaling pathway and cell migration by binding with focal adhesion kinase (FAK). Alternative splicing results in multiple transcript variants encoding different isoforms, although the full-length natures of only two of the variants have been determined to date. GRB7 is an SH2-domain adaptor protein that binds to receptor tyrosine kinases and provides the intra-cellular direct link to the Ras proto-oncogene. Human GRB7 is located on the long arm of chromosome 17, next to the ERBB2 (alias HER2/neu) proto-oncogene. These two genes are commonly co-amplified (present in excess copies) in breast cancers. GRB7 thought to be involved in migration, is well known to be over-expressed in testicular germ cell tumors, esophageal cancers, and gastric cancers.

Synonyms: B47 antibody|Epidermal growth factor receptor GRB 7 antibody|Epidermal growth factor receptor GRB-7 antibody|GRB7 adapter protein antibody|GRB7 antibody|GRB7_HUMAN antibody|Growth factor receptor bound protein 7 antibody|Growth factor receptor-bound protein 7 antibody|OTTHUMP00000164349 antibody|OTTHUMP00000164350 antibody|OTTHUMP00000164351 antibody|OTTHUMP00000164352 antibody

Gene ID: 2886

UniProt: [Q14451](#)

Pathways: [EGFR Signaling Pathway](#), [Ribonucleoprotein Complex Subunit Organization](#)

Application Details

Application Notes:	WB: Concentration: 0.1-0.5 µg/mL, Tested Species: Human, Rat, Predicted Species: Mouse IHC-P: Concentration: 0.5-1 µg/mL, Tested Species: Human, Predicted Species: Mouse, Rat, Epitope Retrieval by Heat: Boiling the paraffin sections in 10 mM citrate buffer, pH 6.0, for 20 mins is required for the staining of formalin/paraffin sections. Notes: Tested Species: Species with positive results. Predicted Species: Species predicted to be fit for the product based on sequence similarities. Other applications have not been tested. Optimal dilutions should be determined by end users.
--------------------	--

Comment:	Antibody can be supported by chemiluminescence kit ABIN921124 in WB, supported by ABIN921231 in IHC(P).
----------	---

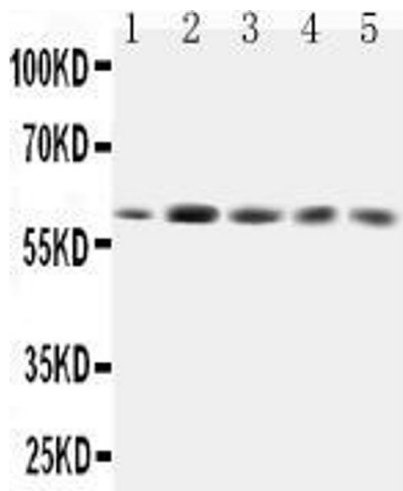
Restrictions:	For Research Use only
---------------	-----------------------

Handling

Format:	Lyophilized
Reconstitution:	Add 0.2 mL of distilled water will yield a concentration of 500 µg/mL.
Concentration:	500 µg/mL
Buffer:	Each vial contains 5 mg BSA, 0.9 mg NaCl, 0.2 mg Na ₂ HPO ₄ , 0.05 mg Thimerosal, 0.05 mg Sodium azide.
Preservative:	Sodium azide, Thimerosal (Merthiolate)
Precaution of Use:	This product contains Sodium azide and Thimerosal (Merthiolate): POISONOUS AND HAZARDOUS SUBSTANCES which should be handled by trained staff only.
Storage:	4 °C, -20 °C
Storage Comment:	At -20°C for one year. After reconstitution, at 4°C for one month. It can also be aliquotted and stored frozen at -20 °C for a longer time. Avoid repeated freezing and thawing.

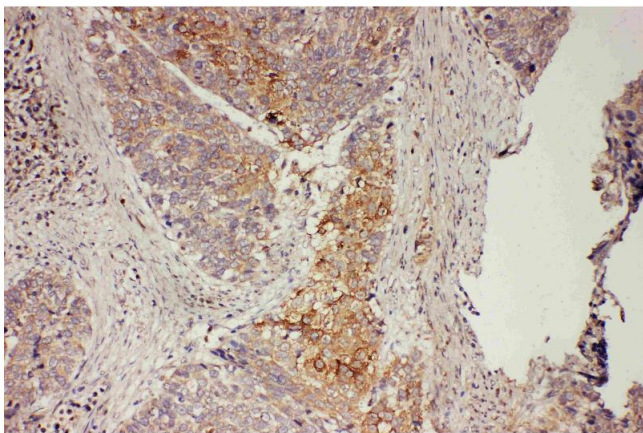
Publications

Product cited in:	Zeng, Yang, Hu, Liu, Yang, Ran, Li, Li, Yu: "Grb7 gene amplification and protein expression by FISH and IHC in ovarian cancer." in: International journal of clinical and experimental pathology , Vol. 8, Issue 9, pp. 11296-304, (2016) (PubMed).
-------------------	--



Western Blotting

Image 1. Anti-GRB7 antibody, All Western blottingAll lanes:
Anti-GRB7 at 0.5ug/ml Lane 1: Rat Testis Tissue Lysate at 40ug Lane 2: SMMC Whole Cell Lysate at 40ug Lane 3: HELA Whole Cell Lysate at 40ug Lane 4: A549 Whole Cell Lysate at 40ug Lane 5: SW620 Whole Cell Lysate at 40ug
Predicted bind size: 60KD Observed bind size: 60KD



Immunohistochemistry

Image 2. Anti-GRB7 antibody, IHC(P): Human Oesophagus Squama Cancer Tissue