

Datasheet for ABIN5518689
anti-LASP1 antibody (C-Term)

2 Images

[Go to Product page](#)

Overview

Quantity:	100 µg
Target:	LASP1
Binding Specificity:	AA 152-168, C-Term
Reactivity:	Human
Host:	Rabbit
Clonality:	Polyclonal
Application:	Western Blotting (WB), Immunohistochemistry (Paraffin-embedded Sections) (IHC (p))

Product Details

Purpose:	Rabbit IgG polyclonal antibody for LIM and SH3 domain protein 1(LASP1) detection. Tested with WB, IHC-P in Human.
Immunogen:	A synthetic peptide corresponding to a sequence at the C-terminus of human LASP1(152-168aa YRRPLEQQPHHIPTSA).
Sequence:	YRRPLEQQP HHIPTSA
Isotype:	IgG
Cross-Reactivity (Details):	No cross reactivity with other proteins.
Characteristics:	<p>Rabbit IgG polyclonal antibody for LIM and SH3 domain protein 1(LASP1) detection. Tested with WB, IHC-P in Human.</p> <p>Gene Name: LIM and SH3 protein 1</p> <p>Protein Name: LIM and SH3 domain protein 1</p>
Purification:	Immunogen affinity purified.

Target Details

Target:	LASP1
Alternative Name:	LASP1 (LASP1 Products)
Background:	<p>LASP1(LIM and SH3 domain protein 1), also known as LASP1, is a protein that in humans is encoded by the LASP1 gene. This gene encodes a member of a LIM protein subfamily which is characterized by a LIM motif and a domain of Src homology region 3. This protein functions as an actin-binding protein and possibly in cytoskeletal organization. LASP1 has been shown to interact with Zyxin. Tomasetto et al.(1995) mapped the LASP1 gene to chromosome 17q11-q21.3 by radioactive in situ hybridization. Northern blot analysis revealed that LASP1 mRNA was expressed at a basal level in all normal tissues examined and overexpressed in 8 % of primary breast cancers. In most of these cancers, LASP1 and ERBB2 were simultaneously overexpressed.</p> <p>Synonyms: LASP 1 antibody LASP-1 antibody LASP1 antibody LASP1_HUMAN antibody LIM and SH3 domain protein 1 antibody LIM and SH3 protein 1 antibody Metastatic lymph node gene 50 protein antibody MLN 50 antibody MLN50 antibody OTTHUMP00000164238 antibody OTTHUMP00000164239 antibody</p>
UniProt:	Q14847

Application Details

Application Notes:	<p>WB: Concentration: 0.1-0.5 µg/mL, Tested Species: Human</p> <p>IHC-P: Concentration: 0.5-1 µg/mL, Tested Species: Human, Epitope Retrieval by Heat: Boiling the paraffin sections in 10 mM citrate buffer, pH 6.0, for 20 mins is required for the staining of formalin/paraffin sections.</p> <p>Notes: Tested Species: Species with positive results. Predicted Species: Species predicted to be fit for the product based on sequence similarities. Other applications have not been tested. Optimal dilutions should be determined by end users.</p>
Comment:	Antibody can be supported by chemiluminescence kit ABIN921124 in WB, supported by ABIN921231 in IHC(P) .
Restrictions:	For Research Use only

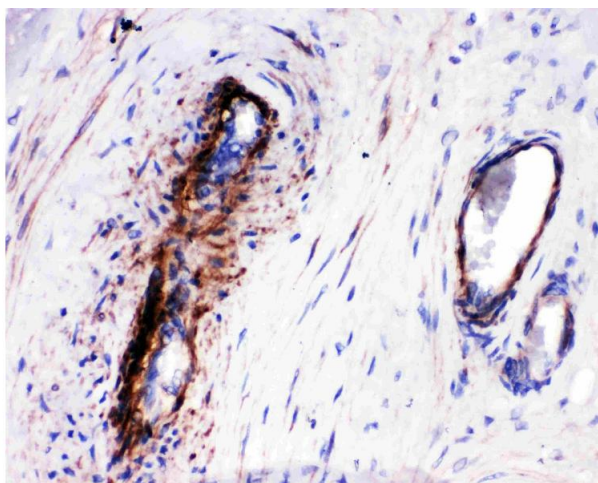
Handling

Format:	Lyophilized
Reconstitution:	Add 0.2 mL of distilled water will yield a concentration of 500 µg/mL.

Handling

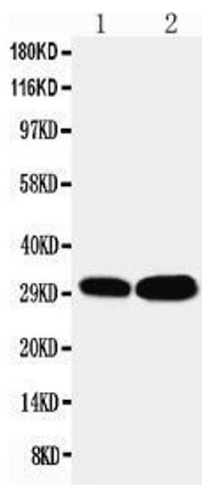
Concentration:	500 µg/mL
Buffer:	Each vial contains 5 mg BSA, 0.9 mg NaCl, 0.2 mg Na ₂ HPO ₄ , 0.05 mg Thimerosal, 0.05 mg Sodium azide.
Preservative:	Sodium azide, Thimerosal (Merthiolate)
Precaution of Use:	This product contains Sodium azide and Thimerosal (Merthiolate): POISONOUS AND HAZARDOUS SUBSTANCES which should be handled by trained staff only.
Storage:	4 °C,-20 °C
Storage Comment:	At -20°C for one year. After reconstitution, at 4°C for one month. It can also be aliquotted and stored frozen at -20 °C for a longer time. Avoid repeated freezing and thawing.

Images



Immunohistochemistry

Image 1. Anti-LASP1 antibody, IHC(P): Human Placenta Tissue



Western Blotting

Image 2. Anti-LASP1 antibody, Western blotting Lane 1: HELA Cell Lysate Lane 2: MCF-7 Cell Lysate