

Datasheet for ABIN5518699
anti-DISC1 antibody (Middle Region)

3 Images

[Go to Product page](#)

Overview

Quantity:	100 µg
Target:	DISC1
Binding Specificity:	AA 461-477, Middle Region
Reactivity:	Human, Mouse, Rat
Host:	Rabbit
Clonality:	Polyclonal
Application:	Western Blotting (WB), Immunohistochemistry (Paraffin-embedded Sections) (IHC (p))

Product Details

Purpose:	Rabbit IgG polyclonal antibody for Disrupted in schizophrenia 1 protein(DISC1) detection. Tested with WB, IHC-P in Human,Mouse,Rat.
Immunogen:	A synthetic peptide corresponding to a sequence in the middle region of human DISC1(461-477aa EKQQLQKEIEALQARMF), different from the related mouse sequence by two amino acids, and from the related rat sequence by four amino acids.
Sequence:	EKQQLQKEIE ALQARMF
Isotype:	IgG
Cross-Reactivity (Details):	No cross reactivity with other proteins.
Characteristics:	Rabbit IgG polyclonal antibody for Disrupted in schizophrenia 1 protein(DISC1) detection. Tested with WB, IHC-P in Human,Mouse,Rat. Gene Name: disrupted in schizophrenia 1 Protein Name: Disrupted in schizophrenia 1 protein

Product Details

Purification: Immunogen affinity purified.

Target Details

Target: DISC1

Alternative Name: DISC1 ([DISC1 Products](#))

Background: DISC1(Disrupted in Schizophrenia 1), is a protein that is encoded by the DISC1 gene in humans. Ma et al.(2002) determined that the mouse Disc1 gene maps to chromosome 8 in a region with homology of synteny to human chromosome 1q42. Ozeki et al.(2003) demonstrated that rodent Disc1 expression displayed pronounced developmental regulation, with the highest levels in late embryonic life during development of the cerebral cortex. Millar et al.(2005) showed that DISC1 interacts with the UCR2 domain of phosphodiesterase-4B, implicated in susceptibility to schizophrenia, and that elevation of cellular cAMP leads to dissociation of PDE4B from DISC1 and in increase in PDE4B activity.

Synonyms: C1orf136 antibody|DISC1 antibody|DISC1_HUMAN antibody|Disrupted in schizophrenia 1 antibody|Disrupted in schizophrenia 1 protein antibody|KIAA0457 antibody|RP4-730B13.1 antibody|SCZD9 antibody

Pathways: [Regulation of Cell Size](#)

Application Details

Application Notes: WB: Concentration: 0.1-0.5 µg/mL, Tested Species: Human, Rat, Predicted Species: Mouse
IHC-P: Concentration: 0.5-1 µg/mL, Tested Species: Human, Mouse, Rat, Epitope Retrieval by Heat: Boiling the paraffin sections in 10 mM citrate buffer, pH 6.0, for 20 mins is required for the staining of formalin/paraffin sections.
Notes: Tested Species: Species with positive results. Predicted Species: Species predicted to be fit for the product based on sequence similarities. Other applications have not been tested.
Optimal dilutions should be determined by end users.

Comment: Antibody can be supported by chemiluminescence kit ABIN921124 in WB, supported by ABIN921231 in IHC(P).

Restrictions: For Research Use only

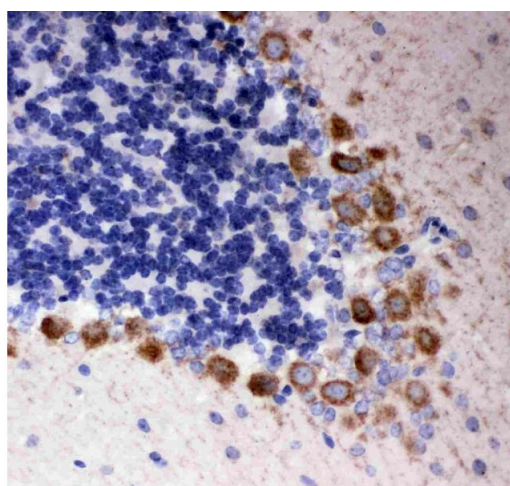
Handling

Format: Lyophilized

Handling

Reconstitution:	Add 0.2 mL of distilled water will yield a concentration of 500 µg/mL.
Concentration:	500 µg/mL
Buffer:	Each vial contains 5 mg BSA, 0.9 mg NaCl, 0.2 mg Na ₂ HPO ₄ , 0.05 mg Thimerosal, 0.05 mg Sodium azide.
Preservative:	Sodium azide, Thimerosal (Merthiolate)
Precaution of Use:	This product contains Sodium azide and Thimerosal (Merthiolate): POISONOUS AND HAZARDOUS SUBSTANCES which should be handled by trained staff only.
Storage:	4 °C, -20 °C
Storage Comment:	At -20°C for one year. After reconstitution, at 4°C for one month. It can also be aliquotted and stored frozen at -20 °C for a longer time. Avoid repeated freezing and thawing.

Images



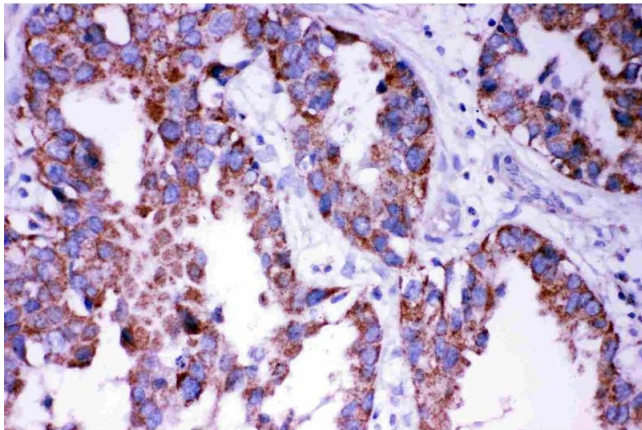
Immunohistochemistry

Image 1. Anti- DISC1 antibody, IHC(P): Rat Cerebellum Tissue



Western Blotting

Image 2. Anti- DISC1 antibody, Western blotting All lanes: Anti DISC1 at 0.5ug/mlWB: U87 Whole Cell Lysate at 40ugPredicted bind size: 94KDObserved bind size: 94KD



Immunohistochemistry

Image 3. Anti- DISC1 antibody, IHC(P): Human Lung Cancer Tissue