

Datasheet for ABIN5518716

anti-LGALS1/Galectin 1 antibody (AA 2-135)[Go to Product page](#)**4** Images

Overview

Quantity:	100 µg
Target:	LGALS1/Galectin 1 (LGALS1)
Binding Specificity:	AA 2-135
Reactivity:	Human, Mouse, Rat
Host:	Rabbit
Clonality:	Polyclonal
Conjugate:	This LGALS1/Galectin 1 antibody is un-conjugated
Application:	Western Blotting (WB), ELISA, Immunohistochemistry (Paraffin-embedded Sections) (IHC (p))

Product Details

Purpose:	Rabbit IgG polyclonal antibody for Galectin-1(LGALS1) detection. Tested with WB, IHC-P, ELISA in Human,Mouse,Rat.
Immunogen:	E. coli-derived human Galectin 1 recombinant protein (Position: A2-D135). Human Galectin 1 shares 88% and 90% amino acid (aa) sequence identity with mouse and rat Galectin 1, respectively.
Isotype:	IgG
Cross-Reactivity (Details):	No cross reactivity with other proteins.
Characteristics:	<p>Rabbit IgG polyclonal antibody for Galectin-1(LGALS1) detection. Tested with WB, IHC-P, ELISA in Human,Mouse,Rat.</p> <p>Gene Name: UPF3 regulator of nonsense transcripts homolog B (yeast)</p> <p>Protein Name: Galectin-1</p>

Product Details

Purification: Immunogen affinity purified.

Target Details

Target: LGALS1/Galectin 1 (LGALS1)

Alternative Name: LGALS1 ([LGALS1 Products](#))

Background: Galectin-1 is a protein that in humans is encoded by the LGALS1 gene. The galectins are a family of beta-galactoside-binding proteins implicated in modulating cell-cell and cell-matrix interactions. Galectin-1 may act as an autocrine negative growth factor that regulates cell proliferation. Galectin-1 expression in Hodgkin Lymphoma has also been shown to mediate immunosuppression of CD8+ T-cells. It is thought to play a role in creating immune tolerance in pregnancy. It has been found that Galectin-1-mediated production of IL6 may assist in augmenting the innate immune response against NiV. Galectin-1 may also be a significant factor that augments the efficiency of the HIV-1 infection process.

Synonyms: 14 kDa laminin-binding protein antibody|14 kDa lectin antibody|Beta galactoside binding lectin antibody|Beta galactoside binding lectin L 14 I antibody|beta galactoside binding protein antibody|Beta-galactoside-binding lectin L-14-I antibody|DKFZp686E23103 antibody|Gal 1 antibody|Gal-1 antibody|GAL1 antibody|Galaptin antibody|Galbp antibody|Galectin antibody|Galectin-1 antibody|Galectin1 antibody|GBP antibody|HBL antibody|HLBP14 antibody|HPL antibody|L 14.5 antibody|L-14.5 antibody|L14 antibody|Lactose binding lectin 1 antibody|Lactose-binding lectin 1 antibody|Lect14 antibody|Lectin galactoside binding soluble 1 antibody|Lectin galactoside-binding soluble 1 antibody|LEG1_HUMAN antibody|LGALS 1 antibody|LGALS1 antibody|Lgals1 lectin galactose binding soluble 1 antibody|MAPK activating protein MP12 antibody|Putative MAPK activating protein MP12 antibody|Putative MAPK-activating protein PM12 antibody|S Lac lectin 1 antibody|S-Lac lectin 1 antibody

Gene ID: 3956

UniProt: [P09382](#)

Pathways: [Carbohydrate Homeostasis](#)

Application Details

Application Notes: WB: Concentration: 0.1-0.5 µg/mL, Tested Species: Human, Mouse, Rat
IHC-P: Concentration: 0.5-1 µg/mL, Tested Species: Human, Mouse, Rat, Epitope Retrieval by Heat: Boiling the paraffin sections in 10 mM citrate buffer, pH 6.0, for 20 mins is required for the

Application Details

staining of formalin/paraffin sections.

ELISA: Concentration: 0.1-0.5 µg/mL, Tested Species: Human

Notes: Tested Species: Species with positive results. Other applications have not been tested.

Optimal dilutions should be determined by end users.

Comment: Antibody can be supported by chemiluminescence kit ABIN921124 in WB, supported by ABIN921231 in IHC(P).

Restrictions: For Research Use only

Handling

Format: Lyophilized

Reconstitution: Add 0.2 mL of distilled water will yield a concentration of 500 µg/mL.

Concentration: 500 µg/mL

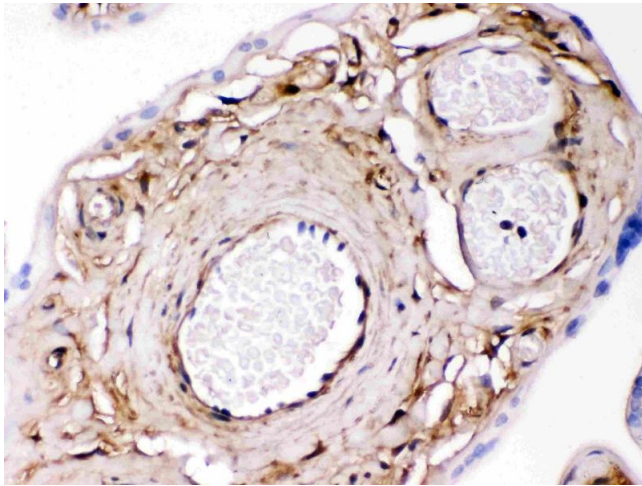
Buffer: Each vial contains 5 mg BSA, 0.9 mg NaCl, 0.2 mg Na₂HPO₄, 0.05 mg Sodium azide.

Preservative: Sodium azide

Precaution of Use: This product contains Sodium azide: a POISONOUS AND HAZARDOUS SUBSTANCE which should be handled by trained staff only.

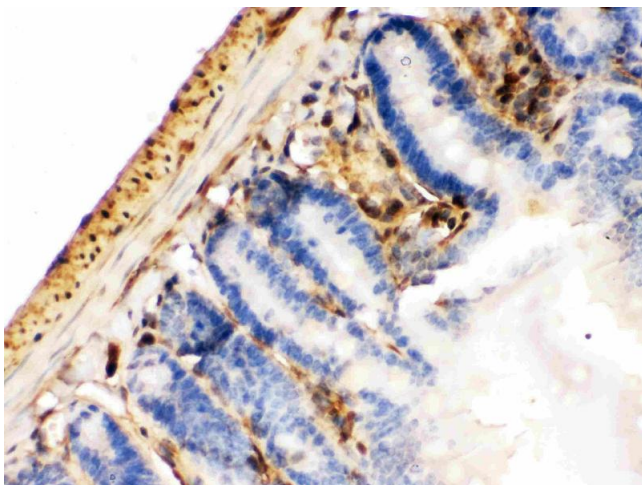
Storage: 4 °C, -20 °C

Storage Comment: At -20°C for one year. After reconstitution, at 4°C for one month.
It can also be aliquotted and stored frozen at -20 °C for a longer time. Avoid repeated freezing and thawing.



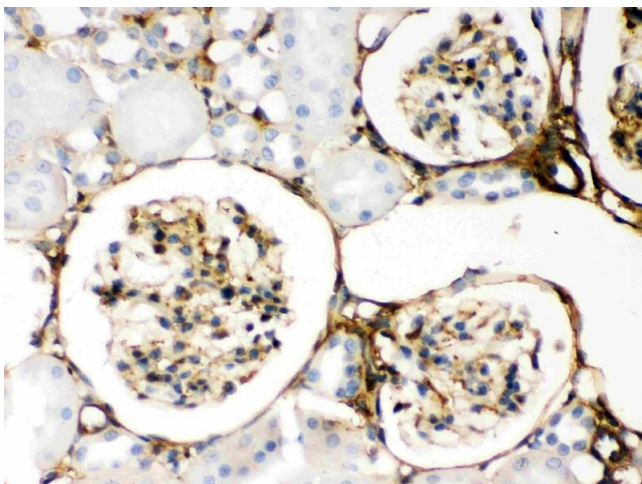
Immunohistochemistry

Image 1. Galectin 1 was detected in paraffin-embedded sections of human placenta tissues using rabbit anti-Galectin 1 Antigen Affinity purified polyclonal antibody (Catalog #) at 1 µg/mL. The immunohistochemical section was developed using SABC method (Catalog # SA1022).



Immunohistochemistry

Image 2. Galectin 1 was detected in paraffin-embedded sections of mouse intestine cancer tissues using rabbit anti-Galectin 1 Antigen Affinity purified polyclonal antibody (Catalog #) at 1 µg/mL. The immunohistochemical section was developed using SABC method (Catalog # SA1022).



Immunohistochemistry

Image 3. Galectin 1 was detected in paraffin-embedded sections of rat kidney tissues using rabbit anti- Galectin 1 Antigen Affinity purified polyclonal antibody (Catalog #) at 1 µg/mL. The immunohistochemical section was developed using SABC method (Catalog # SA2010).

Please check the [product details page](#) for more images. Overall 4 images are available for ABIN5518716.