

Datasheet for ABIN5518733  
**anti-ANGPTL2 antibody (Middle Region)**[Go to Product page](#)

## 5 Images

## Overview

Quantity:	100 µg
Target:	ANGPTL2
Binding Specificity:	AA 275-312, Middle Region
Reactivity:	Human, Mouse, Rat
Host:	Rabbit
Clonality:	Polyclonal
Application:	Western Blotting (WB), Immunohistochemistry (Paraffin-embedded Sections) (IHC (p))

## Product Details

Purpose:	Rabbit IgG polyclonal antibody for Angiopoietin-related protein 2(ANGPTL2) detection. Tested with WB, IHC-P in Human,Mouse,Rat.
Immunogen:	A synthetic peptide corresponding to a sequence in the middle region of human ANGPTL2 (275-312aa WRDCLQALEDGHDTSIIYLVKPENTNRLMQVWCDQRHD), different from the related mouse sequence by one amino acid.
Sequence:	WRDCLQALED GHDTSIIYLV KPENTNRLMQ VWCDQRHD
Isotype:	IgG
Cross-Reactivity (Details):	No cross reactivity with other proteins.
Characteristics:	<p>Rabbit IgG polyclonal antibody for Angiopoietin-related protein 2(ANGPTL2) detection. Tested with WB, IHC-P in Human,Mouse,Rat.</p> <p>Gene Name: angiopoietin like 2</p> <p>Protein Name: Angiopoietin-related protein 2</p>

## Product Details

Purification: Immunogen affinity purified.

## Target Details

Target: ANGPTL2

Alternative Name: ANGPTL2 ([ANGPTL2 Products](#))

Background: Angiopoietin-related protein 2, also known as angiopoietin-like protein 2, is a protein that in humans is encoded by the ANGPTL2 gene. Angiopoietins are members of the vascular endothelial growth factor family and the only known growth factors largely specific for vascular endothelium. Angiopoietin-1, angiopoietin-2, and angiopoietin-4 participate in the formation of blood vessels. ANGPTL2 protein is a secreted glycoprotein with homology to the angiopoietins and may exert a function on endothelial cells through autocrine or paracrine action.

Synonyms: AI593246 | Angptl2 | Arp2 | HARP | MGC8889 | UNQ170/PRO196 | Q9UKU9

Gene ID: 23452

## Application Details

Application Notes: WB: Concentration: 0.1-0.5 µg/mL, Tested Species: Mouse, Rat, Predicted Species: Human  
IHC-P: Concentration: 0.5-1 µg/mL, Tested Species: Human, Mouse, Rat, Epitope Retrieval by Heat: Boiling the paraffin sections in 10 mM citrate buffer, pH 6.0, for 20 mins is required for the staining of formalin/paraffin sections.  
Notes: Tested Species: Species with positive results. Predicted Species: Species predicted to be fit for the product based on sequence similarities. Other applications have not been tested.  
Optimal dilutions should be determined by end users.

Comment: Antibody can be supported by chemiluminescence kit ABIN921124 in WB, supported by ABIN921231 in IHC(P).

Restrictions: For Research Use only

## Handling

Format: Lyophilized

Reconstitution: Add 0.2 mL of distilled water will yield a concentration of 500 µg/mL.

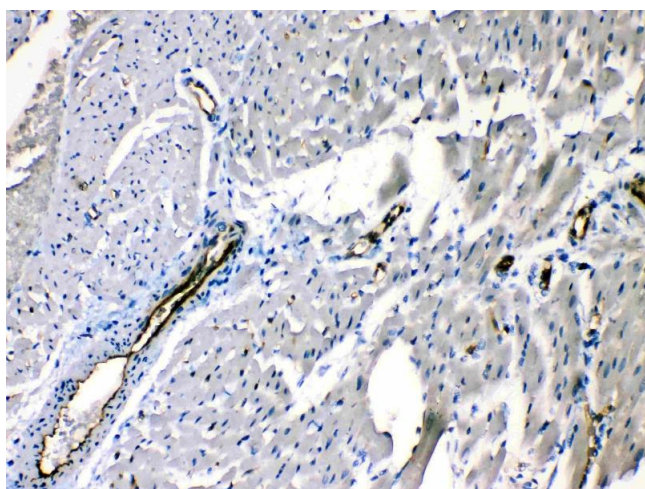
Concentration: 500 µg/mL

Buffer: Each vial contains 5 mg BSA, 0.9 mg NaCl, 0.2 mg Na<sub>2</sub>HPO<sub>4</sub>, 0.05 mg Sodium azide.

## Handling

Preservative:	Sodium azide
Precaution of Use:	This product contains Sodium azide: a POISONOUS AND HAZARDOUS SUBSTANCE which should be handled by trained staff only.
Storage:	4 °C,-20 °C
Storage Comment:	At -20°C for one year. After reconstitution, at 4°C for one month. It can also be aliquotted and stored frozen at -20 °C for a longer time. Avoid repeated freezing and thawing.

## Images



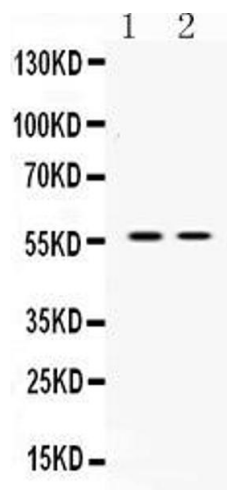
### Immunohistochemistry

**Image 1.** ANGPTL2 was detected in paraffin-embedded sections of rat cardiac muscle tissues using rabbit anti-ANGPTL2 Antigen Affinity purified polyclonal antibody (Catalog # ) at 1 µg/mL. The immunohistochemical section was developed using SABC method (Catalog # SA1022).



### Immunohistochemistry

**Image 2.** ANGPTL2 was detected in paraffin-embedded sections of rat intestine tissues using rabbit anti-ANGPTL2 Antigen Affinity purified polyclonal antibody (Catalog # ) at 1 µg/mL. The immunohistochemical section was developed using SABC method (Catalog # SA1022).



**Western Blotting**

**Image 3.** Western blot analysis of ANGPTL2 expression in rat stomach extract ( Lane 1) and mouse ovary extract ( Lane 2). ANGPTL2 at 57KD was detected using rabbit anti-ANGPTL2 Antigen Affinity purified polyclonal antibody (Catalog # ) at 0.5 µg/mL. The blot was developed using chemiluminescence (ECL) method (Catalog # EK1002).

Please check the [product details page](#) for more images. Overall 5 images are available for ABIN5518733.