

Datasheet for ABIN5518741
anti-BCL2L1 antibody (AA 1-219)



[Go to Product page](#)

4 Images

4 Publications

Overview

Quantity:	100 µg
Target:	BCL2L1
Binding Specificity:	AA 1-219
Reactivity:	Human, Mouse, Rat
Host:	Rabbit
Clonality:	Polyclonal
Conjugate:	This BCL2L1 antibody is un-conjugated
Application:	Western Blotting (WB), Immunohistochemistry (Paraffin-embedded Sections) (IHC (p))

Product Details

Purpose:	Rabbit IgG polyclonal antibody for Bcl-2-like protein 1(BCL2L1) detection. Tested with WB, IHC-P in Human,Mouse,Rat.
Immunogen:	E.coli-derived human Bcl-XL recombinant protein (Position: M1-T219). Human Bcl-XL shares 97.9% amino acid (aa) sequence identity with both mouse and rat Bcl-XL.
Isotype:	IgG
Cross-Reactivity (Details):	No cross reactivity with other proteins.
Characteristics:	<p>Rabbit IgG polyclonal antibody for Bcl-2-like protein 1(BCL2L1) detection. Tested with WB, IHC-P in Human,Mouse,Rat.</p> <p>Gene Name: BCL2-like 1</p> <p>Protein Name: Bcl-2-like protein 1</p>
Purification:	Immunogen affinity purified.

Target Details

Target:	BCL2L1
Alternative Name:	BCL2L1 (BCL2L1 Products)
Background:	<p>Bcl-2-like protein 1, also known as Bcl-XL, is a protein that in humans is encoded by the BCL2L1 gene. The protein encoded by this gene belongs to the BCL-2 protein family. BCL-2 family members form hetero- or homodimers and act as anti- or pro-apoptotic regulators that are involved in a wide variety of cellular activities. The proteins encoded by this gene are located at the outer mitochondrial membrane, and have been shown to regulate outer mitochondrial membrane channel (VDAC) opening. VDAC regulates mitochondrial membrane potential, and thus controls the production of reactive oxygen species and release of cytochrome C by mitochondria, both of which are the potent inducers of cell apoptosis. Alternative splicing results in multiple transcript variants encoding two different isoforms. The longer isoform (Bcl-xL) acts as an apoptotic inhibitor and the shorter form (Bcl-xS) acts as an apoptotic activator.</p> <p>Synonyms: Bcl X Bcl xL BCL XL/S Bcl xS Bcl2-L-1 BCL2L Bcl2l1 BCLX BclXL BclXs PPP1R52 Q07817</p>
Gene ID:	598
UniProt:	Q07817
Pathways:	Apoptosis , Negative Regulation of intrinsic apoptotic Signaling

Application Details

Application Notes:	<p>WB: Concentration: 0.1-0.5 µg/mL, Tested Species: Human, Mouse, Rat</p> <p>IHC-P: Concentration: 0.5-1 µg/mL, Tested Species: Human, Epitope Retrieval by Heat: Boiling the paraffin sections in 10 mM citrate buffer, pH 6.0, for 20 mins is required for the staining of formalin/paraffin sections.</p> <p>Notes: Tested Species: Species with positive results. Other applications have not been tested. Optimal dilutions should be determined by end users.</p>
Comment:	Antibody can be supported by chemiluminescence kit ABIN921124 in WB, supported by ABIN921231 in IHC(P).
Restrictions:	For Research Use only

Handling

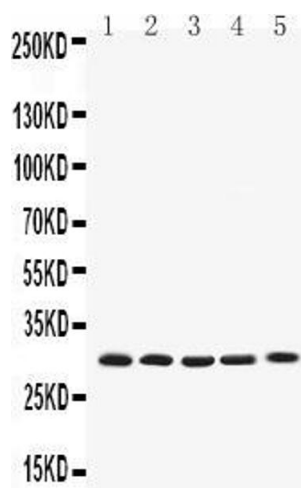
Format:	Lyophilized
---------	-------------

Handling

Reconstitution:	Add 0.2 mL of distilled water will yield a concentration of 500 µg/mL.
Concentration:	500 µg/mL
Buffer:	Each vial contains 5 mg BSA, 0.9 mg NaCl, 0.2 mg Na ₂ HPO ₄ , 0.05 mg Sodium azide.
Preservative:	Sodium azide
Precaution of Use:	This product contains Sodium azide: a POISONOUS AND HAZARDOUS SUBSTANCE which should be handled by trained staff only.
Storage:	4 °C,-20 °C
Storage Comment:	At -20°C for one year. After reconstitution, at 4°C for one month. It can also be aliquotted and stored frozen at -20 °C for a longer time. Avoid repeated freezing and thawing.

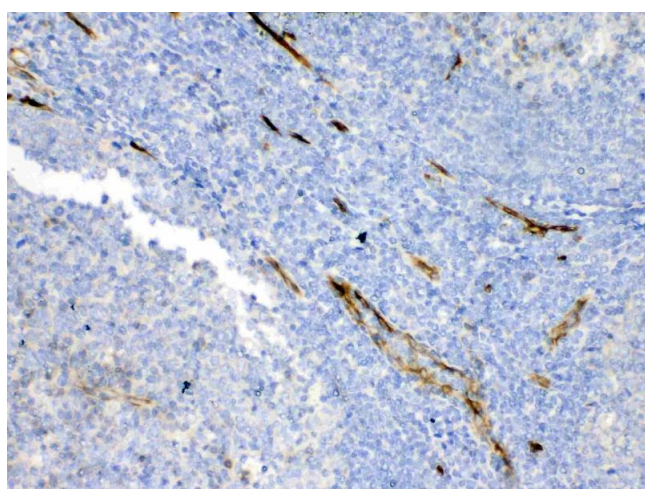
Publications

Product cited in:	<p>Guo, Guo, Zhao, Cai: "Active targeting co-delivery system based on hollow mesoporous silica nanoparticles for antitumor therapy in ovarian cancer stem-like cells." in: Oncology reports, Vol. 38, Issue 3, pp. 1442-1450, (2018) (PubMed).</p> <p>Cui, Li, Xu, Zhang, Sun, Chen: "Emodin alleviates severe acute pancreatitis-associated acute lung injury by decreasing pre-B-cell colony-enhancing factor expression and promoting polymorphonuclear neutrophil apoptosis." in: Molecular medicine reports, Vol. 16, Issue 4, pp. 5121-5128, (2018) (PubMed).</p> <p>Liu, Lin, Mi, Li, Zhang: "Grape Seed Proanthocyanidin Extract Prevents Ovarian Aging by Inhibiting Oxidative Stress in the Hens." in: Oxidative medicine and cellular longevity, Vol. 2018, pp. 9390810, (2018) (PubMed).</p> <p>Zhou, Zhang, Li, Hao, Liu, Wang: "Azithromycin synergistically enhances anti-proliferative activity of vincristine in cervical and gastric cancer cells." in: Cancers, Vol. 4, Issue 4, pp. 1318-32, (2013) (PubMed).</p>
-------------------	---



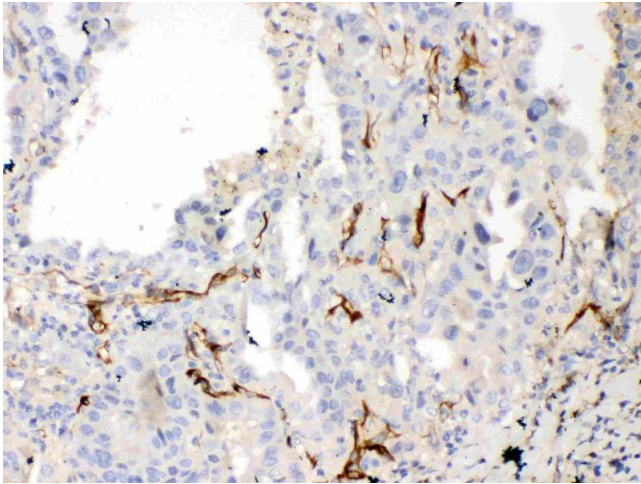
Western Blotting

Image 1. Western blot analysis of Bcl-XL using anti-Bcl-XL antibody . Electrophoresis was performed on a 5-20% SDS-PAGE gel at 70V (Stacking gel) / 90V (Resolving gel) for 2-3 hours. The sample well of each Lane was loaded with 50ug of sample under reducing conditions. Lane 1: rat thymus tissue lysates, Lane 2: NIH3T3 whole cell lysates, Lane 3: HEPA1-6 whole cell lysates, Lane 4: SGC7901 whole cell lysates, Lane 5: HEPG2 whole cell lysates. After Electrophoresis, proteins were transferred to a Nitrocellulose membrane at 150mA for 50-90 minutes. Blocked the membrane with 5% Non-fat Milk/ TBS for 1.5 hour at RT. The membrane was incubated with rabbit anti-Bcl-XL antigen affinity purified polyclonal antibody (Catalog #) at 0.5 µg/mL overnight at 4°C, then washed with TBS-0.1%Tween 3 times with 5 minutes each and probed with a goat anti-rabbit IgG-HRP secondary antibody at a dilution of 1:10000 for 1.5 hour at RT. The signal is developed using an Enhanced Chemiluminescent detection (ECL) kit (Catalog # EK1002) with Tanon 5200 system. A specific band was detected for Bcl-XL at approximately 30KD. The expected band size for Bcl-XL is at 18KD.



Immunohistochemistry

Image 2. IHC analysis of Bcl-XL using anti-Bcl-XL antibody . Bcl-XL was detected in paraffin-embedded section of human tonsil tissues. Heat mediated antigen retrieval was performed in citrate buffer (pH6, epitope retrieval solution) for 20 mins. The tissue section was blocked with 10% goat serum. The tissue section was then incubated with 1µg/ml rabbit anti-Bcl-XL Antibody overnight at 4°C. Biotinylated goat anti-rabbit IgG was used as secondary antibody and incubated for 30 minutes at 37°C. The tissue section was developed using Streptavidin-Biotin-Complex (SABC)(Catalog # SA1022) with DAB as the chromogen.



Immunohistochemistry

Image 3. IHC analysis of Bcl-XL using anti-Bcl-XL antibody . Bcl-XL was detected in paraffin-embedded section of human lung cancer tissues. Heat mediated antigen retrieval was performed in citrate buffer (pH6, epitope retrieval solution) for 20 mins. The tissue section was blocked with 10% goat serum. The tissue section was then incubated with 1µg/ml rabbit anti-Bcl-XL Antibody overnight at 4°C. Biotinylated goat anti-rabbit IgG was used as secondary antibody and incubated for 30 minutes at 37°C. The tissue section was developed using Streptavidin-Biotin-Complex (SABC)(Catalog # SA1022) with DAB as the chromogen.

Please check the [product details page](#) for more images. Overall 4 images are available for ABIN5518741.