

Datasheet for ABIN5518778
anti-NAA15 antibody (N-Term)[Go to Product page](#)

2 Images

Overview

Quantity:	100 µg
Target:	NAA15
Binding Specificity:	AA 244-287, N-Term
Reactivity:	Human, Mouse
Host:	Rabbit
Clonality:	Polyclonal
Application:	Western Blotting (WB), Immunohistochemistry (Paraffin-embedded Sections) (IHC (p))

Product Details

Purpose:	Rabbit IgG polyclonal antibody for N-alpha-acetyltransferase 15, NatA auxiliary subunit(NAA15) detection. Tested with WB, IHC-P in Human,Mouse.
Immunogen:	A synthetic peptide corresponding to a sequence at the N-terminus of human NARG1 (244-287aa ADVYRGLQERNPENWAYYKGLEKALKPANMLERLKIYEEAWTKY), different from the related mouse sequence by one amino acid.
Sequence:	ADVYRGLQER NPENWAYYKG LEKALKPANM LERLKIYEEA WTKY
Isotype:	IgG
Cross-Reactivity (Details):	No cross reactivity with other proteins.
Characteristics:	<p>Rabbit IgG polyclonal antibody for N-alpha-acetyltransferase 15, NatA auxiliary subunit(NAA15) detection. Tested with WB, IHC-P in Human,Mouse.</p> <p>Gene Name: N(alpha)-acetyltransferase 15, NatA auxiliary subunit</p> <p>Protein Name: N-alpha-acetyltransferase 15, NatA auxiliary subunit</p>

Product Details

Purification: Immunogen affinity purified.

Target Details

Target: NAA15

Alternative Name: NAA15 ([NAA15 Products](#))

Background: NMDA receptor-regulated protein 1 (NARG1), also known as GA19 or Tbdn100 is a protein that in humans is encoded by the NAA15 gene. It is mapped to chromosome 4. NARG1 is the auxiliary subunit of the NatA (N α -acetyltransferase A) complex. Both, Naa15 and Naa16 interact with the ribosome in yeast (via the ribosomal proteins, uL23 and uL29), humans and rat, thereby linking the NatA/Naa10 to the ribosome and facilitating co-translational acetylation of nascent polypeptide chains as they emerges from the exit tunnel. Furthermore, Naa15 might act as a scaffold for other factors, including the chaperone like protein HYPK (Huntingtin Interacting Protein K) and Naa50, the catalytic acetyltransferase subunit of NatE.

Synonyms: ASTBDN | GA19 | mNAT1 | Naa15 | NATH | Tbdn 1 | Tbdn100 | tubedown-1 | Q9BXJ9

Gene ID: 80155

Application Details

Application Notes: WB: Concentration: 0.1-0.5 μ g/mL, Tested Species: Human
IHC-P: Concentration: 0.5-1 μ g/mL, Tested Species: Mouse, Predicted Species: Human, Epitope Retrieval by Heat: Boiling the paraffin sections in 10 mM citrate buffer, pH 6.0, for 20 mins is required for the staining of formalin/paraffin sections.
Notes: Tested Species: Species with positive results. Predicted Species: Species predicted to be fit for the product based on sequence similarities. Other applications have not been tested.
Optimal dilutions should be determined by end users.

Comment: Antibody can be supported by chemiluminescence kit ABIN921124 in WB, supported by ABIN921231 in IHC(P).

Restrictions: For Research Use only

Handling

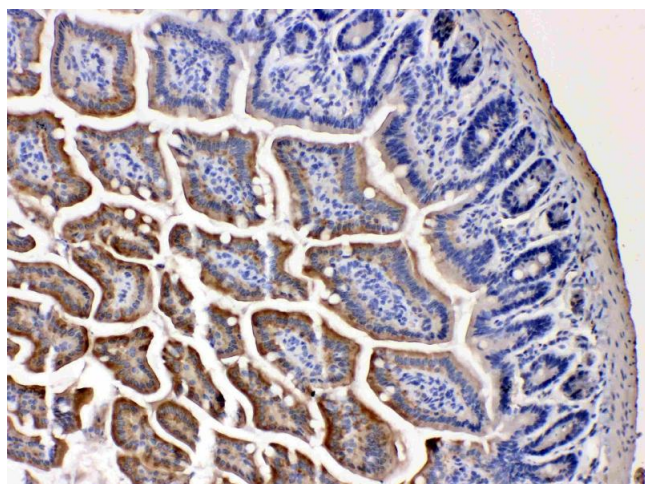
Format: Lyophilized

Reconstitution: Add 0.2 mL of distilled water will yield a concentration of 500 μ g/mL.

Handling

Concentration:	500 µg/mL
Buffer:	Each vial contains 5 mg BSA, 0.9 mg NaCl, 0.2 mg Na ₂ HPO ₄ , 0.05 mg Sodium azide.
Preservative:	Sodium azide
Precaution of Use:	This product contains Sodium azide: a POISONOUS AND HAZARDOUS SUBSTANCE which should be handled by trained staff only.
Storage:	4 °C, -20 °C
Storage Comment:	At -20°C for one year. After reconstitution, at 4°C for one month. It can also be aliquotted and stored frozen at -20 °C for a longer time. Avoid repeated freezing and thawing.

Images



Immunohistochemistry

Image 1. NARG1 was detected in paraffin-embedded sections of mouse intestine tissues using rabbit anti-NARG1 Antigen Affinity purified polyclonal antibody (Catalog #) at 1 µg/mL. The immunohistochemical section was developed using SABC method (Catalog # SA1022).



Western Blotting

Image 2. Western blot analysis of NARG1 expression in 293T whole cell lysates (Lane 1). NARG1 at 101KD was detected using rabbit anti- NARG1 Antigen Affinity purified polyclonal antibody (Catalog #) at 0.5 µg/mL. The blot was developed using chemiluminescence (ECL) method (Catalog # EK1002).