

Datasheet for ABIN5518784
anti-PD-1 antibody (N-Term)



[Go to Product page](#)

3 Images

Overview

Quantity:	100 µg
Target:	PD-1 (PDCD1)
Binding Specificity:	AA 84-117, N-Term
Reactivity:	Mouse, Rat
Host:	Rabbit
Clonality:	Polyclonal
Conjugate:	This PD-1 antibody is un-conjugated
Application:	Flow Cytometry (FACS), Western Blotting (WB), Immunohistochemistry (IHC), Immunofluorescence (IF)

Product Details

Purpose:	Anti-PD-1/PDCD1 Antibody Picoband®
Immunogen:	A synthetic peptide corresponding to a sequence at the N-terminus of mouse PD1, different from the related human sequence by fifteen amino acids.
Sequence:	NGLSQPVQDA RFQIIQLPNR HDFHNMILDT RRND
Isotype:	IgG
Cross-Reactivity (Details):	No cross-reactivity with other proteins.
Characteristics:	Anti-PD-1 PDCD1 Antibody (ABIN5518784). Tested in Flow Cytometry, IF, IHC, WB applications. This antibody reacts with Mouse, Rat. The brand Picoband indicates this is a premium antibody that guarantees superior quality, high affinity, and strong signals with minimal background in Western blot applications. Only our best-performing antibodies are designated as Picoband,

Product Details

ensuring unmatched performance.

Purification: Immunogen affinity purified.

Target Details

Target: PD-1 (PDCD1)

Alternative Name: PDCD1 ([PDCD1 Products](#))

Background: Tissue Specificity: Expressed in all tissues, but more abundant in heart, brain and skeletal muscle.

Background: Transcription factor SOX-9 is a protein that in humans is encoded by the SOX9 gene. The protein encoded by this gene recognizes the sequence CCTTGAG along with other members of the HMG-box class DNA-binding proteins. It acts during chondrocyte differentiation and, with steroidogenic factor 1, regulates transcription of the anti-Muellerian hormone (AMH) gene. Deficiencies lead to the skeletal malformation syndrome campomelic dysplasia, frequently with sex reversal.

Molecular Weight: 60 kDa

Gene ID: 18566

UniProt: [Q02242](#)

Pathways: [Cancer Immune Checkpoints](#)

Application Details

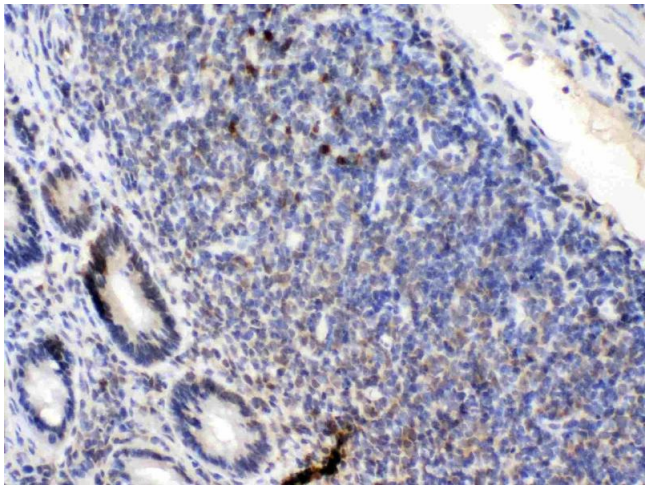
Application Notes: Western blot, 0.1-0.5 µg/mL, Mouse
Immunohistochemistry(Paraffin-embedded Section), 2-5 µg/mL, Mouse, Rat
Immunofluorescence, 5 µg/mL, Mouse
Flow Cytometry(Fixed), 1-3 µg/1x10⁶ cells, Mouse
1. Barber, D. L., Wherry, E. J., Masopust, D., Zhu, B., Allison, J. P., Sharpe, A. H., Freeman, G. J., Ahmed, R. Restoring function in exhausted CD8 T cells during chronic viral infection. Nature 439: 682-687, 2006. 2. Dai, H., Wan, N., Zhang, S., Moore, Y., Wan, F., Dai, Z. Cutting edge: programmed death-1 defines CD8+CD122+ T cells as regulatory versus memory T cells. J. Immun. 185: 803-807, 2010. 3. Finger, L. R., Pu, J., Wasserman, R., Vibhakar, R., Louie, E., Hardy, R. R., Burrows, P. D., Billips, L. G. The human PD-1 gene: complete cDNA, genomic organization, and developmentally regulated expression in B cell progenitors. Gene 197: 177-187, 1997.

Comment: Antibody can be supported by chemiluminescence kit ABIN921124 in WB, supported by

Application Details

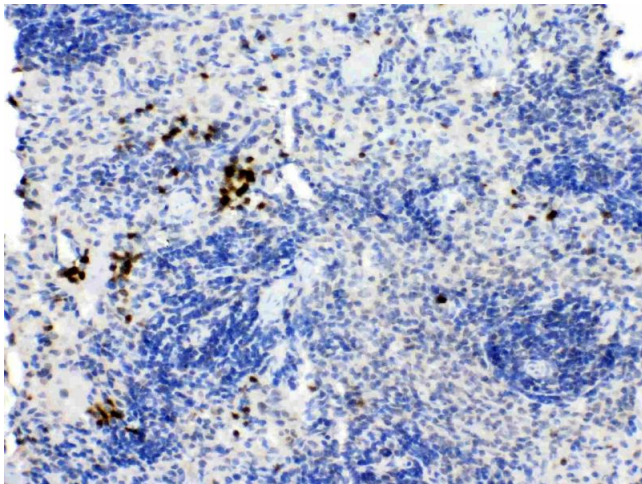
	ABIN921231 in IHC(P).
Restrictions:	For Research Use only
Handling	
Format:	Lyophilized
Reconstitution:	Adding 0.2 mL of distilled water will yield a concentration of 500 µg/mL.
Concentration:	500 µg/mL
Buffer:	Each vial contains 4 mg Trehalose, 0.9 mg NaCl and 0.2 mg Na2HPO4.
Storage:	4 °C,-20 °C
Storage Comment:	At -20°C for one year from date of receipt. After reconstitution, at 4°C for one month. It can also be aliquotted and stored frozen at -20°C for six months. Avoid repeated freezing and thawing.

Images



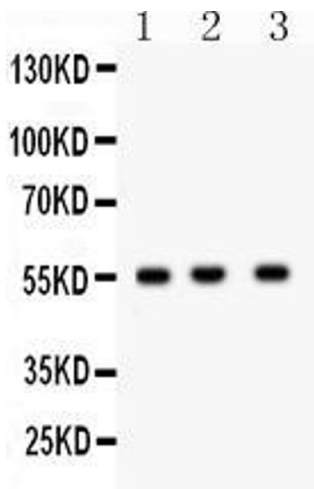
Immunohistochemistry

Image 1. PD1 was detected in paraffin-embedded sections of rat lymphaden tissues using rabbit anti- PD1 Antigen Affinity purified polyclonal antibody (Catalog #) at 1 µg/mL. The immunohistochemical section was developed using SABC method (Catalog # SA1022).



Immunohistochemistry

Image 2. PD1 was detected in paraffin-embedded sections of rat spleen tissues using rabbit anti- PD1 Antigen Affinity purified polyclonal antibody (Catalog #) at 1 µg/mL. The immunohistochemical section was developed using SABC method (Catalog # SA1022).



Western Blotting

Image 3. Western blot analysis of PD1 expression in mouse liver extract (Lane 1), mouse spleen extract (Lane 2) and NIH3T3 whole cell lysates (Lane 3). PD1 at 55KD was detected using rabbit anti- PD1 Antigen Affinity purified polyclonal antibody (Catalog #) at 0.5 µg/mL. The blot was developed using chemiluminescence (ECL) method (Catalog # EK1002).