

Datasheet for ABIN5518785
anti-PDE5A antibody (N-Term)[Go to Product page](#)

2 Images

Overview

Quantity:	100 µg
Target:	PDE5A
Binding Specificity:	AA 20-63, N-Term
Reactivity:	Human, Rat
Host:	Rabbit
Clonality:	Polyclonal
Application:	Western Blotting (WB), Immunohistochemistry (Paraffin-embedded Sections) (IHC (p))

Product Details

Purpose:	Rabbit IgG polyclonal antibody for cGMP-specific 3',5'-cyclic phosphodiesterase(PDE5A) detection. Tested with WB, IHC-P in Human,Rat.
Immunogen:	A synthetic peptide corresponding to a sequence at the N-terminus of human PDE5A (20-63aa QKQQQRDQDSVEAWLDDHWDFTFSYFVRKATREMVNAWFAERVH), different from the related mouse sequence by eight amino acids.
Sequence:	QKQQQRDQDS VEAWLDDHWD FTFSYFVRKA TREMVNAWFA ERVH
Isotype:	IgG
Cross-Reactivity (Details):	No cross reactivity with other proteins.
Characteristics:	Rabbit IgG polyclonal antibody for cGMP-specific 3',5'-cyclic phosphodiesterase(PDE5A) detection. Tested with WB, IHC-P in Human,Rat. Gene Name: phosphodiesterase 5A Protein Name: cGMP-specific 3',5'-cyclic phosphodiesterase

Product Details

Purification: Immunogen affinity purified.

Target Details

Target: PDE5A

Alternative Name: PDE5A ([PDE5A Products](#))

Background: CGMP-specific phosphodiesterase type 5 is an enzyme from the phosphodiesterase class. It is found in various tissues, most prominently the corpus cavernosum and the retina. It has also been recently discovered to play a vital role in the cardiovascular system. Furthermore, PDE5A also plays a role in signal transduction by regulating the intracellular concentration of cyclic nucleotides. This PDE5A gene is mapped to 4q26.

Synonyms: CGB PDE | CGB-PDE | CGBPDE | CN5A | CN5N | PDE 5 | PDE 5A | PDE5 | Pde5a | PDE5A1 | 076074

Gene ID: 8654

UniProt: [076074](#)

Pathways: [Regulation of G-Protein Coupled Receptor Protein Signaling](#)

Application Details

Application Notes: WB: Concentration: 0.1-0.5 µg/mL, Tested Species: Human, Rat
IHC-P: Concentration: 0.5-1 µg/mL, Tested Species: Human, Epitope Retrieval by Heat: Boiling the paraffin sections in 10 mM citrate buffer, pH 6.0, for 20 mins is required for the staining of formalin/paraffin sections.
Notes: Tested Species: Species with positive results. Other applications have not been tested. Optimal dilutions should be determined by end users.

Comment: Antibody can be supported by chemiluminescence kit ABIN921124 in WB, supported by ABIN921231 in IHC(P).

Restrictions: For Research Use only

Handling

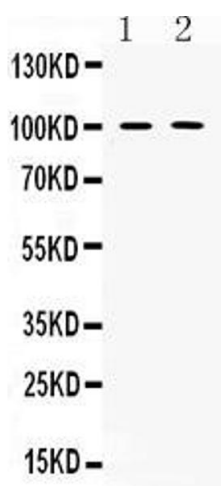
Format: Lyophilized

Reconstitution: Add 0.2 mL of distilled water will yield a concentration of 500 µg/mL.

Handling

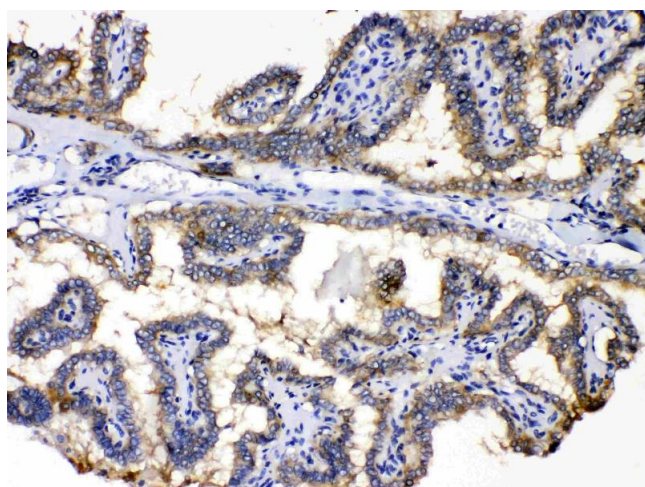
Concentration:	500 µg/mL
Buffer:	Each vial contains 5 mg BSA, 0.9 mg NaCl, 0.2 mg Na ₂ HPO ₄ , 0.05 mg Sodium azide.
Preservative:	Sodium azide
Precaution of Use:	This product contains Sodium azide: a POISONOUS AND HAZARDOUS SUBSTANCE which should be handled by trained staff only.
Storage:	4 °C, -20 °C
Storage Comment:	At -20°C for one year. After reconstitution, at 4°C for one month. It can also be aliquotted and stored frozen at -20 °C for a longer time. Avoid repeated freezing and thawing.

Images



Western Blotting

Image 1. Western blot analysis of PDE5A expression in rat lung extract (Lane 1) and PANC-1 whole cell lysates(Lane 2). PDE5A at 100KD was detected using rabbit anti- PDE5A Antigen Affinity purified polyclonal antibody (Catalog #) at 0.5 µg/mL. The blot was developed using chemiluminescence (ECL) method (Catalog # EK1002).



Immunohistochemistry

Image 2. PDE5A was detected in paraffin-embedded sections of human thyroid cancer tissues using rabbit anti-PDE5A Antigen Affinity purified polyclonal antibody (Catalog #) at 1 µg/mL. The immunohistochemical section was developed using SABC method (Catalog # SA1022).