



Datasheet for ABIN5518789
anti-SERPINA5 antibody (AA 86-406)



[Go to Product page](#)

3 Images

Overview

Quantity:	100 µg
Target:	SERPINA5
Binding Specificity:	AA 86-406
Reactivity:	Human, Mouse, Rat
Host:	Rabbit
Clonality:	Polyclonal
Application:	Western Blotting (WB), Immunohistochemistry (Paraffin-embedded Sections) (IHC (p))

Product Details

Purpose:	Rabbit IgG polyclonal antibody for Plasma serine protease inhibitor(SERPINA5) detection. Tested with WB, IHC-P in Human,Mouse,Rat.
Immunogen:	E.coli-derived human SERPINA5 recombinant protein (Position: S86-P406). Human SERPINA5 shares 66% amino acid (aa) sequence identity with mouse SERPINA5.
Isotype:	IgG
Cross-Reactivity (Details):	No cross reactivity with other proteins.
Characteristics:	Rabbit IgG polyclonal antibody for Plasma serine protease inhibitor(SERPINA5) detection. Tested with WB, IHC-P in Human,Mouse,Rat. Gene Name: serpin family A member 5 Protein Name: Plasma serine protease inhibitor
Purification:	Immunogen affinity purified.

Target Details

Target:	SERPINA5
Alternative Name:	SERPINA5 (SERPINA5 Products)
Background:	<p>Protein C inhibitor (PCI), also known as SERPINA5, is serine protease inhibitor of serpin type that is found in most tissues and fluids, including blood plasma, seminal plasma and urine of human. It is a 52kD glycoprotein and belongs to serine protease inhibitor (Serpin) super family of protein. This family member is a glycoprotein that can inhibit several serine proteases, including protein C and various plasminogen activators and kallikreins, and it thus plays diverse roles in hemostasis and thrombosis in multiple organs. This gene is mapped on the q arm of chromosome 14.</p> <p>Synonyms: IPSP PAI3 PAI-3 PAI 3 PCI PCI-B PLANH 3 PLANH3 PROCI Protein C inhibitor Serpin A5 Serpina5 P05154</p>
Gene ID:	5104
UniProt:	P05154

Application Details

Application Notes:	<p>WB: Concentration: 0.1-0.5 µg/mL, Tested Species: Human, Rat</p> <p>IHC-P: Concentration: 0.5-1 µg/mL, Tested Species: Mouse, Rat, Predicted Species: Human, Epitope Retrieval by Heat: Boiling the paraffin sections in 10 mM citrate buffer, pH 6.0, for 20 mins is required for the staining of formalin/paraffin sections.</p> <p>Notes: Tested Species: Species with positive results. Predicted Species: Species predicted to be fit for the product based on sequence similarities. Other applications have not been tested.</p> <p>Optimal dilutions should be determined by end users.</p>
Comment:	Antibody can be supported by chemiluminescence kit ABIN921124 in WB, supported by ABIN921231 in IHC(P).
Restrictions:	For Research Use only

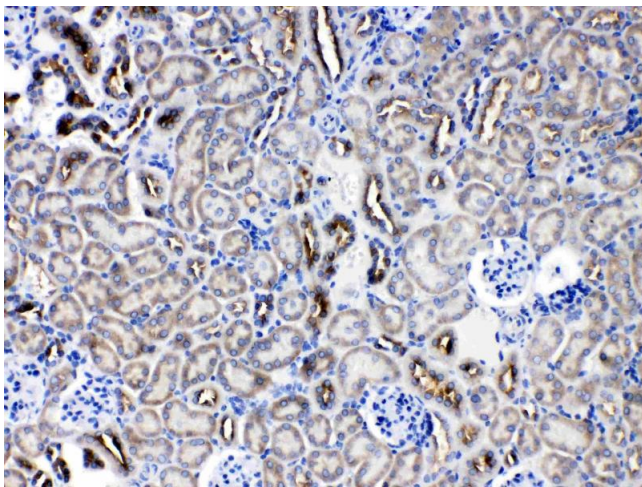
Handling

Format:	Lyophilized
Reconstitution:	Add 0.2 mL of distilled water will yield a concentration of 500 µg/mL.
Concentration:	500 µg/mL
Buffer:	Each vial contains 5 mg BSA, 0.9 mg NaCl, 0.2 mg Na ₂ HPO ₄ , 0.05 mg Sodium azide.

Handling

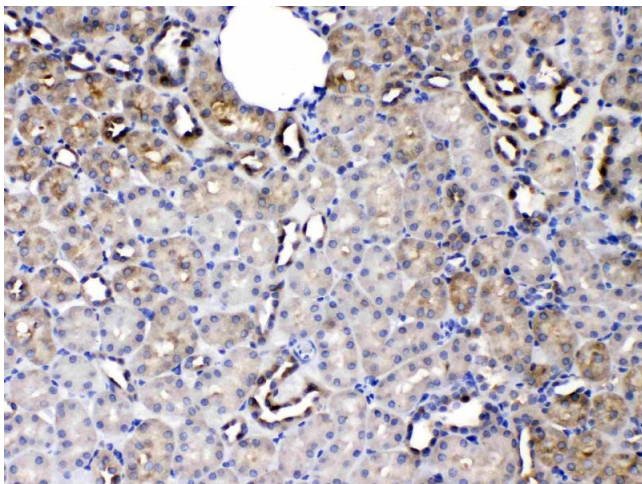
Preservative:	Sodium azide
Precaution of Use:	This product contains Sodium azide: a POISONOUS AND HAZARDOUS SUBSTANCE which should be handled by trained staff only.
Storage:	4 °C,-20 °C
Storage Comment:	At -20°C for one year. After reconstitution, at 4°C for one month. It can also be aliquotted and stored frozen at -20 °C for a longer time. Avoid repeated freezing and thawing.

Images



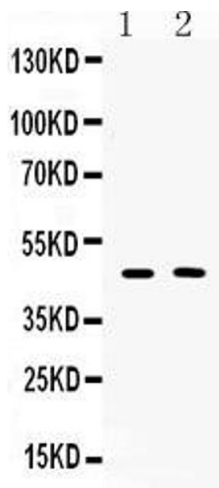
Immunohistochemistry

Image 1. SERPINA5 was detected in paraffin-embedded sections of mouse kidney tissues using rabbit anti-SERPINA5 Antigen Affinity purified polyclonal antibody (Catalog #) at 1 µg/mL. The immunohistochemical section was developed using SABC method (Catalog # SA1022).



Immunohistochemistry

Image 2. SERPINA5 was detected in paraffin-embedded sections of rat kidney tissues using rabbit anti- SERPINA5 Antigen Affinity purified polyclonal antibody (Catalog #) at 1 µg/mL. The immunohistochemical section was developed using SABC method (Catalog # SA1022).



Western Blotting

Image 3. Western blot analysis of SERPINA5 expression in rat liver extract (Lane 1) and SKOV3 whole cell lysates (Lane 2). SERPINA5 at 46KD was detected using rabbit anti-SERPINA5 Antigen Affinity purified polyclonal antibody (Catalog #) at 0.5 $\mu\text{g}/\text{mL}$. The blot was developed using chemiluminescence (ECL) method (Catalog # EK1002).