

Datasheet for ABIN5518797  
**anti-TUB antibody (C-Term)**[Go to Product page](#)

## 1 Image

## Overview

Quantity:	100 µg
Target:	TUB
Binding Specificity:	AA 395-429, C-Term
Reactivity:	Human
Host:	Rabbit
Clonality:	Polyclonal
Application:	Western Blotting (WB)

## Product Details

Purpose:	Rabbit IgG polyclonal antibody for Tubby protein homolog(TUB) detection. Tested with WB in Human.
Immunogen:	A synthetic peptide corresponding to a sequence at the C-terminus of human TUB 1 (395-429aa VHERVSIRPRNEHETLLARWQNKNTESIIE LQNKT), different from the related mouse and rat sequences by one amino acid.
Sequence:	VHERVSIRPR NEHETLLARW QNKNTESIIE LQNKT
Isotype:	IgG
Cross-Reactivity (Details):	No cross reactivity with other proteins.
Characteristics:	Rabbit IgG polyclonal antibody for Tubby protein homolog(TUB) detection. Tested with WB in Human. Gene Name: tubby bipartite transcription factor Protein Name: Tubby protein homolog

## Product Details

Purification: Immunogen affinity purified.

## Target Details

Target: TUB

Alternative Name: TUB ([TUB Products](#))

Background: Tubby protein homolog is a protein that in humans is encoded by the TUB gene. This gene encodes a member of the Tubby family of bipartite transcription factors. The encoded protein may play a role in obesity and sensorineural degradation. The crystal structure has been determined for a similar protein in mouse, and it functions as a membrane-bound transcription regulator that translocates to the nucleus in response to phosphoinositide hydrolysis. Two transcript variants encoding distinct isoforms have been identified for this gene.

Synonyms: rd5 | TUB 1 | TUB | P50607

Gene ID: 7275

UniProt: [P50607](#)

Pathways: [RTK Signaling](#), [Sensory Perception of Sound](#)

## Application Details

Application Notes: WB: Concentration: 0.1-0.5 µg/mL, Tested Species: Human  
Notes: Tested Species: Species with positive results.  
Other applications have not been tested. Optimal dilutions should be determined by end users.

Comment: Antibody can be supported by chemiluminescence kit ABIN921124 in WB.

Restrictions: For Research Use only

## Handling

Format: Lyophilized

Reconstitution: Add 0.2 mL of distilled water will yield a concentration of 500 µg/mL.

Concentration: 500 µg/mL

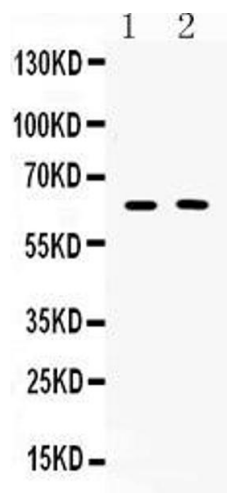
Buffer: Each vial contains 5 mg BSA, 0.9 mg NaCl, 0.2 mg Na<sub>2</sub>HPO<sub>4</sub>, 0.05 mg Sodium azide.

Preservative: Sodium azide

## Handling

Precaution of Use:	This product contains Sodium azide: a POISONOUS AND HAZARDOUS SUBSTANCE which should be handled by trained staff only.
Storage:	4 °C,-20 °C
Storage Comment:	At -20°C for one year. After reconstitution, at 4°C for one month. It can also be aliquotted and stored frozen at -20 °C for a longer time. Avoid repeated freezing and thawing.

## Images



### Western Blotting

**Image 1.** Western blot analysis of TUB 1 expression in COLO320 whole cell lysates ( Lane 1) and MCF-7 whole cell lysates ( Lane 2). TUB 1 at 62KD was detected using rabbit anti- TUB 1 Antigen Affinity purified polyclonal antibody (Catalog #) at 0.5 µg/mL. The blot was developed using chemiluminescence (ECL) method (Catalog # EK1002).